

Installation Catalog

2024

Table of Contents

SUSPENSION & MOUNTING	2 - 7
TAPES, ADHESIVES, & HARDWARE	8 - 9
DUCTWORK & METAL	10 - 15
VENTILATION & EXHAUST	16 - 23
GRILLES, REGISTERS & DIFFUSERS	24 - 25
CONDENSATE MANAGEMENT	26 - 28
PIPING, FITTINGS, & LINESETS	29 - 35
ELECTRICAL & WIRING	36 - 42
INDEX	43 - 44

Strut Channel & Threaded Rod

Strut Channel

Item #	Dimensions	Gauge	Length
STRUT-DEEP-14G	1-5/8" x 1-5/8"	14	10'
STRUT-DEEP-12G	(Deep)	12	10'
STRUT-SHALLOW-14G	13/16" x 1-5/8"	14	10'
	(Shallow)		



Threaded Rod

Item #	Size	TPI (threads per inch)	Length
ALLTHREAD-1/4-10	1/4"	20	10'
ALLTHREAD-3/8-06	3/8"	16	6'
ALLTHREAD-3/8-10			10'
ALLTHREAD-1/2-10	1/2"	13	10'



Pipe Clamps

Item #	Size	Pack Qty.
CN04	1/4"	25 pk.
CN06	3/8"	
CN08	1/2"	
CN10	5/8"	
CN12	3/4"	
CN14	7/8"	20 pk.
CN18	1-1/8"	
CN22	1-3/8"	
CN26	1-5/8"	
CN34	2-1/8"	10 pk



Cush-A-Nator®
cush-a-clamps can retrofit/replace old clamps without raising the pipe.

Klo-Shure® insulation couplings support and secure the copper tube independent of the insulation. The insulation is then inserted into the coupling to provide a superior vapor barrier to other methods.



Copper Pipe Size	1/2" Wall Insulation Item #	3/4" Wall Insulation Item #	1" Wall Insulation Item #
1/4"	724025	726025	728025
3/8"	724037	726037	728037
1/2"	724050	726050	728050
5/8"	724062	726062	728062
3/4"	724075	726075	728075
7/8"	724087	726087	728087
1-1/8"	724112	726112	728112
1-3/8"	724137	726137	728137
1-5/8"	724162	726162	728162
2-1/8"	724212	726212	728212

Strut & Rod Hardware

Spring Nuts allow for placement anywhere with in the channel. The spring holds the nut in the desired position until the rod or bolt is attached.

Item #	Thread Size
B2-4EG	1/4" - 20tpi
B2-6EG	3/8" - 16tpi
B2-8EG	1/2" - 13tpi



Square Washers facilitate a secure attachment point on strut channel when combined with a channel nut, threaded rod, or other hardware.

Item #	Rod Size	Dimensions
B5052EG	1/4"	1-5/8"
B5053EG	3/8"	x
B5054EG	1/2"	1-5/8"



Hex Head Bolts

Item #	Length	Thread Size	Pack Qty.
MB381	1"	3/8" 16tpi	100 pk
MB38112	1.5"		
MB382	2"		



Hex Nuts

Item #	Thread Size	Pack Qty.
HN14	1/4" - 20tpi	100 pk.
HN38	3/8" - 16tpi	50 pk.
HN12	1/2" - 13tpi	25 pk.
339	Hex Nut Assortment	339 pc.



Rod Couplers

Item #	Thread Size	Pack Qty.
RC1	1/4" - 20tpi	100 pk.
RC2	3/8" - 16tpi	50 pk.
RC3	1/2" - 13tpi	



Fender Washers

Item #	ID - OD	Pack Qty.
FENW316114	3/16" x 1-1/4"	100 pk.
FENW142	1/4" x 2"	
FENW382	3/8" x 2"	
FENW122	1/2" x 2"	



Lock Washers

Item #	Size	Pack Qty.
LW14	1/4"	100 pk.
LW38	3/8"	
LW12	1/2"	

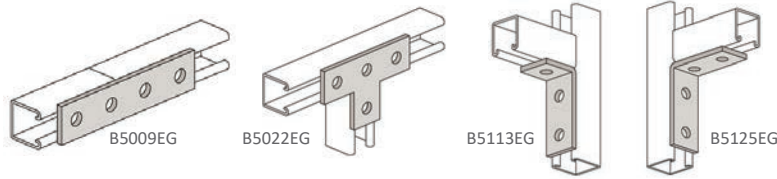


Flat Washers

Item #	ID - OD	Pack Qty.
FW14	5/16" x 3/4"	100 pk.
FW38	7/16" x 1"	
FW12	9/16" x 1-3/8"	50 pk.
FW2	Flat Washer Assortment	421 pc.



Strut & Rod Mounting



Splice Plates & Corners allow for easy connection of multiple pieces of strut channel together, or to securely attach strut to a wall or other surface.

Splice Plates & Corners

Item #	Description
B5009EG	4-Hole Splice Plate
B5022EG	4-Hole Flat Tee Plate
B5113EG	3-Hole 90° Corner Angle
B5125EG	4-Hole 90° Corner Angle



Beam Clamps are used to join strut or threaded rod to I-beams, purlins, and other structural supports

Beam Clamps

Item #	Max Load	Rod Size	Height
BC9025EG	100 - 250 lbs.	1/4"	1.5"
BC800037EG	350 lbs.	3/8"	
BC800050EG	470 lbs.	1/2"	
BC810037EG	400 lbs.	3/8"	2"
BC810050EG	500 lbs.	1/2"	
B5709EG	1,200 lbs. (as a pair)	For both 1-5/8" and 13/16" strut	

Rod Hanging Anchors are a female threaded rod receptacle that screws into wood, steel, or concrete. Side and overhead mount versions allow for quick and easy threaded rod installation in a variety of areas.

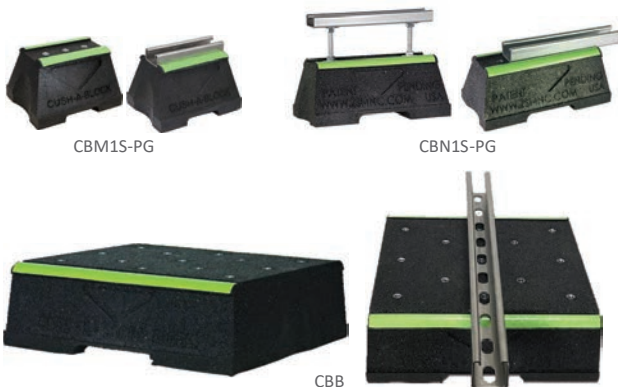


Rod Hanging Anchors

Item #	Direction	Application	Rod Size
SSW38B	Overhead Mount	Wood	3/8"
SSW38S	Side Mount		
SSM38BR	Overhead Mount	Steel	
SSM38SR	Side Mount		
SSC38B	Overhead Mount	Concrete	

Item #	Drive Socket Description
UNIB	Socket for Wood & Metal Rod Anchors
SCP38	Socket for 3/8" Concrete Rod Anchors

Rooftop Pipe & Strut Supports



The **Cush-A-Block** Rooftop Support is UV resistant and suitable for installation on most types of roofing material or other flat surfaces. 3/8" threaded rod (not included) or fasteners can be used to attach the included 10" section of 13/16" strut channel.

Item #	Style	Height	Height w/ Strut	Width	Strut Length	Total Length	Uniform Load lbs.	Fastener Size
CBM1S-PG	Mini	4"	4-5/8"	5"	5"	6-5/8"	400	
CBN1S-PG	Standard	4-3/16"	4-13/16"	5"	10"	10-1/2"	2,500	3/8" x 16tpi
CBB	Biggie	4-3/16"	-	12-1/2"	-	12-5/16"	7,500	



Many More Varieties Are Available!

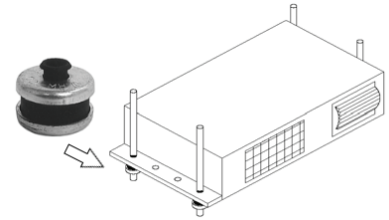
Suspended Vibration Isolators

Threaded Rod Disc Isolators

Item #	Max Load	Rod Size
AVHM-50	110 lbs.	3/8"
AVHM-100	220 lbs.	

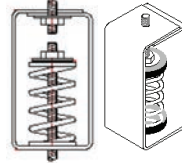
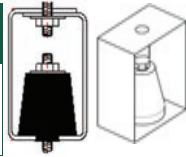


AVHM Hanger Mount Series are an easier way to isolate vibration on suspended equipment. Now there is no need to cut threaded rod. Simply place these units under the strut or equipment. The elastomer element and rod collar provide sound level up to 17 dB (A).



Threaded Rod Neoprene Isolators

Item #	Max Load	Height	Width	Depth
HND-A-2	40 lbs.			
HND-A-3	70 lbs.	3"	2"	2.25"
HND-A-4	115 lbs.			



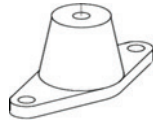
Threaded Rod Spring Isolators

Item #	Rated Load	Solid Load	Height	Width	Depth
HSF-043	57 lbs.	86 lbs.			
HSF-044	76 lbs.	115 lbs.	3.5"	1.5"	2.15"
HSF-045	148 lbs.	222 lbs.			

Floor Mount Vibration Isolators

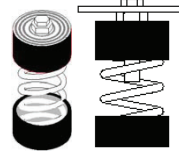
Floor Mount Neoprene Isolators

Item #	Max Load	Height	Width	Depth
FMD-A-2	40 lbs.			
FMD-A-3	70 lbs.	1.25"	3.13"	1.75"
FMD-A-4	115 lbs.			



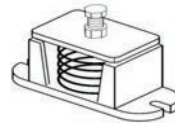
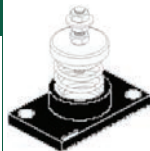
Free-Standing Spring Mount

Item #	Rated Load	Solid Load	Free Height	Width
BN-042	33 lbs.	50 lbs.	3.25"	1.5"
BN-043	57 lbs.	86 lbs.		



Floor-Mount Uncased Spring Isolators

Item #	Rated Load	Solid Load	Free Height	Width	Depth
BK-121	40 lbs.	60 lbs.			
BK-122	66 lbs.	100 lbs.	4"	4.5"	2.5"
BK-123	110 lbs.	165 lbs.			

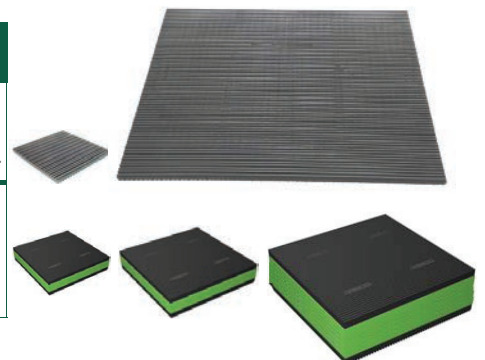


Floor-Mount Cased Spring Isolators

Item #	Rated Load	Solid Load	Free Height	Width	Depth
ZA-123	110 lbs.	165 lbs.			
ZA-124	173 lbs.	260 lbs.	4.25"	4.25"	2.25"
ZA-125	246 lbs.	370 lbs.			
ZA-126	300 lbs.	450 lbs.			

Vibration Pads

Item #	Size	Max. Load	Features
ISO-RUBBER-2"X2"X3/8"	2" x 2" x 3/8"	60 lbs. per Sq. In.	Corrugated on both sides to reduce vibration, noise, as well as "creep" associated with vibration. The 18" x 18" sheets can be cut to any size requirements.
ISO-RUBBER-18"X18"X3/8"	18" x 18" x 3/8"		
ISO-RUBBER-2"X2"X1"	2" x 2" x 1"	280 lbs.	Triple-Core™ design has different density layers to provide greater vibration and noise reduction. Excellent resistance to oil, water and ozone (recommended for outdoor use).
ISO-RUBBER-4"X4"X1"	4" x 4" x 1"	1,120 lbs.	
ISO-RUBBER-8"X8"X2"	8" x 8" x 2"	4,480 lbs.	



Drain Pans

Secondary Drain Pans with Welded Nipples

Type	Item #	Size	Application
TAM / GAM / TEM Air Handlers	PAN-32X60	32" x 60"	18,000 - 42,000 BTU Horizontal
	PAN-32X66	32" x 66"	48,000 - 60,000 BTU Horizontal
	PAN-32X36	32" x 36"	Vertical AHU Install

Type	Item #	Size	Application	Gauge
Slab Coils	PAN-18X44	18" x 44"	001 - 007 Slab Coils	22ga.
	PAN-24X48	24" x 48"	009 Slab Coils	
Box Coils	PAN-32X36	32" x 36"	002 - 007 Box Coils	22ga.
	PAN-32X40	32" x 40"	009 & 010 Box Coils	
	PAN-32X76	32" x 76"	Condensing Furnace + Box Coil	



Type	Model	Vertical Install Item #	Vertical Install Size	Horizontal Install Item #	Horizontal Install Size	Gauge
TWE Commercial Air Handlers	TWE060	PAN-32X48	32" x 48"	PAN-46X54	46" x 54"	22ga.
	TWE072 - TWE090	PAN-32X60	32" x 60"	PAN-56X60	56" x 60"	
	TWE120	PAN-32X76	32" x 76"	(2) PAN-30X72 (1) CLEAT-S-05	60" x 72" (Two 30" x 72" Pans Joined with S-Cleat)	
	TWE150 - TWE180	PAN-36X90	36" x 90"	(2) PAN-38X90 (1) CLEAT-S-10	76" x 90" (Two 38" x 90" Pans Joined with S-Cleat)	
	TWE240 - TWE300	PAN-40X100	40" x 100"	(2) PAN-40X100 (1) CLEAT-S-10	80" x 100" (Two 40" x 100" Pans Joined with S-Cleat)	

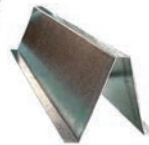
Horizontal Installation Supports



The **Air Handler Block** is a cost effective base support for air handlers, coils, and furnaces. Raising the unit 4" provides excellent air flow as well as preventing damage from ground or secondary pan contact. It is lightweight, absorbs vibration and is strong enough to support most units.

Styrofoam Blocks

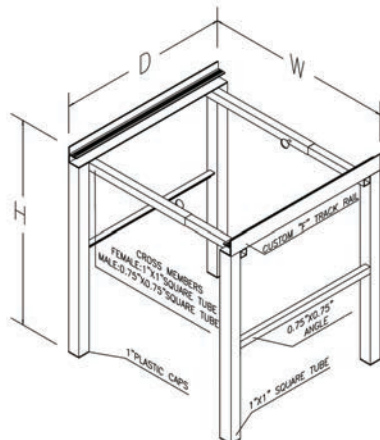
Item #	Size	Case Qty.
7-60	8" x 8" x 4"	144



Furnace Stands and Bases provide a strong, durable platform on which to set gas or electric units. The flange allows additional connection to floors or joists. The base secures the feet when sitting in a secondary drain pan.

Furnace Stands & Bases

Item #	Description	H x W x D	Gauge
FS-SMALL STAND	Small Size Stand	6" x 9" x 30"	20ga.
FS-SMALL BASE	Small Size Base	9" x 30"	26ga.
FS-LARGE STAND	Large Size Stand	9" x 11.5" x 30"	20ga.
FS-LARGE BASE	Large Size Base	11.5" x 30"	26ga.



Adjustable Vertical Air Handler Stands

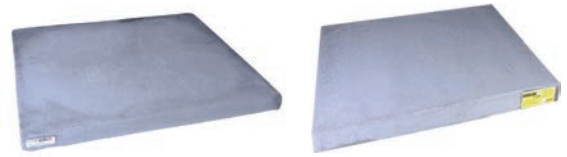
Adjustable Stands are perfect for free draw return air systems where the AHU is in a closet or other conditioned space. Or use ductboard to easily insulate around the stand for ducted returns. The built-in filter rack accommodates standard 1" filters.

Item #	Size	D	W	H	Material	Max Weight
AHEB1722W	Standard - AHUs	22"	16" - 26"	17.5"	6061-T6 Extruded Aluminum	300 lbs.
AHEB1727W	Deep - Furnaces	27"				

Equipment Pads & Mounting Hardware

Condenser Pads

Type	Item #	Size	Application	Weight	Pallet Qty.
UltraLite®	PAD-UC1838-3	18" x 38" x 3"	Small Ductless Condensers	20 lbs.	30
	PAD-UC2448-3	24" x 48" x 3"	Large Ductless Condensers	30 lbs.	15
	PAD-UC3636-3	36" x 36" x 3"	Small Unitary Condensers	30 lbs.	15
	PAD-UC4040-3	40" x 40" x 3"	Large Unitary Condensers	34 lbs.	15
Hurricane Pad™	PAD-H1840-4	18" x 40" x 4"	Ductless Condensers	62 lbs.	16
	PAD-H3636-4	36" x 36" x 4"	Small Unitary Condensers	100 lbs.	8
	PAD-H4040-4	40" x 40" x 4"	Large Unitary Condensers	140 lbs.	8



UltraLite® has a fiber-reinforced concrete outer skin and foam inner core, which allows the pad to flex instead of crack. The textured surface prevents sliding, and allows water drainage.

Designed for regions of the Gulf Coast, **The Hurricane Pad™** meets stringent requirements for wind resistance. Meets the Florida Building Code and can withstand winds up to 150 MPH.

Type	Item #	Size	Application	Weight	Pallet Qty.
GenPad®	GENPAD-3	54" x 31" x 3"	8 - 26kW Generators	189 lbs.	5
	GENPAD-4	54" x 31" x 4"	Hurricane-Rated Applications	275 lbs.	

GenPad® is a composite pad with pre-drilled mounting holes. Specifically fits Generac & Honeywell 8-26kW standby generators.



Tie Down Clips & Concrete Anchors

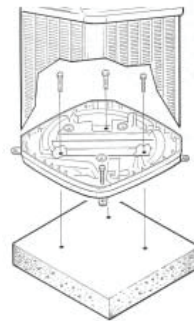
Item #	Description	Size	Qty.
TDC-4	12.ga. Tie-Down Clip	1" x 1" x 4"	4 pk.



Anchor Item #	Hex Size	Size W x L	Included Masonry Drill Bit	Pack Qty.
14H114	5/16"	1/4" x 1-1/4"	3/16" x 3-1/2"	100 pk.
14H134	5/16"	1/4" x 2-1/4"	3/16" x 3-1/2"	100 pk.
14H234	5/16"	1/4" x 2-3/4"	3/16" x 4-1/2"	100 pk.
CK14	Blue Concrete Anchor Assortment			60 pc.

Trane "Extreme Condition" Mount Kit

These clips perfectly fit the pre-existing OEM slots in the Trane condenser base pad, providing a clean, "no show" finished look.



Item #	Fits	Qty.
BAYECMT023	Base 2 (29" x 26") Base 3 (33" x 30")	For 5 - 10 Units
BAYECMT004	Base 4 (37" x 34")	

Condenser Wall Mount Brackets

For Ductless Condensers

Item #	Features	Max Load	Dimensions
230-B3L	16ga. Powder-Coated Steel	500 lbs.	22" D x 15" H x 35" W



For Large Condensers

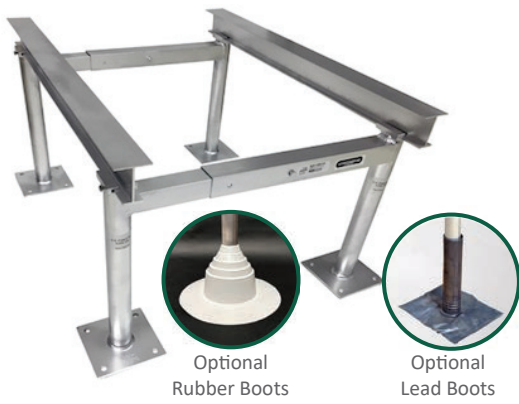
Item #	Bracket Length	Bracket Height	Bracket Spacing	Inner Spacing	Max Unit Size	Max Load
AWB143036-WLR24	30"	36"	24"	14"	30" x 30"	550 lbs.
AWB143636-WLR30	36"	36"	30"	20"	38" x 36"	
AWB144836-WLR36	48"	36"	36"	15"	45" x 48"	



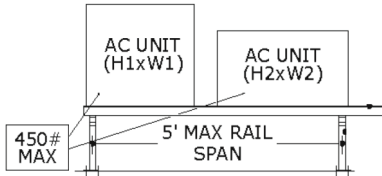
- 6061-T6 alloy aluminum construction
- Original raised-seal engineering drawings can be ordered
- Rated for wind load up to 170 psf

Aluminum Equipment Stands

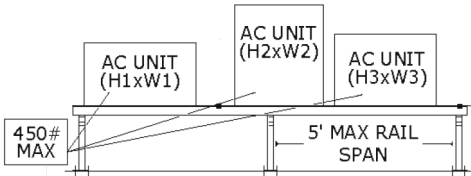
Aluminum Mechanical Unit Stands are engineered for use within hurricane zones (HVHZ - Miami-Dade County & Broward County). Carrying a Florida State Approval, these stands are available with optional cross-mounting angles, rubber boots, lead boots, and electrical mounting brackets.



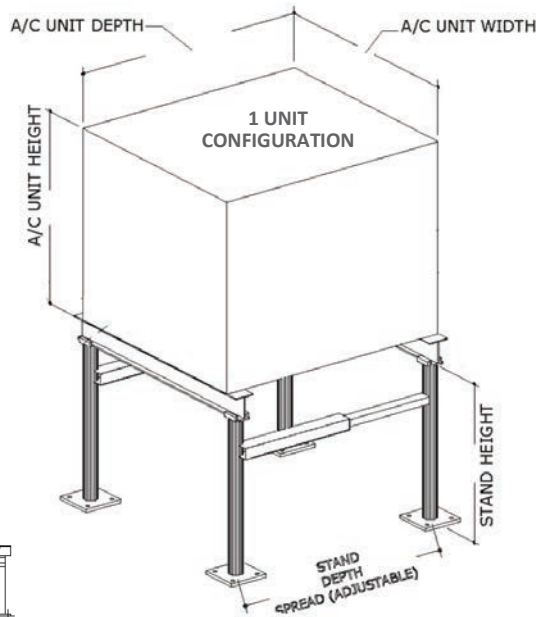
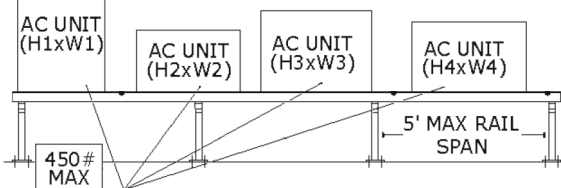
2 UNITS: 2 FRAME CONFIGURATION



3 UNITS: 3 FRAME CONFIGURATION



4 UNITS: 4 FRAME CONFIGURATION



Legs: Minimum of (2) Required

Item #	Height	Adjustable Width
ASMUS18	18"	
ASMUS24	24"	20" - 30"
ASMUS30	30"	
ASMUH18	18"	
ASMUH24	24"	34" - 42"
ASMUH30	30"	

I-Beams: Minimum of (2) Required

Item #	Length
ASI-3	3'
ASI-6	6'
ASI-9	9'
ASI-12	12'
ASI-15	15'
ASI-18	18'



Condenser Security Cages

AC GUARD™ security cages prevent AC theft and unwanted access. They are made of 16 gauge steel, and are powder coated to resist rust and corrosion.

Adjustable and expandable to fit most AC units for commercial and residential applications. Mount AC Guard to concrete pads, or install with ground anchors.

Item #	Description	Width	Depth	Height
ACGUKIT	Large Cage w/ Top Lock & Bars	30" - 48"	30" - 48"	34" - 59"
ACMSKIT	Mini-Split Security Cage w/ Locks	32" - 45"	12" - 18"	23" - 57"
ACEM40	Expanded Metal Grating - 3pk.		40" x 40"	
ACEMS	Ductless Expanded Metal - 3pk.		24" x 30"	

Tapes

Metal Tapes

Item #	Size	Features	UL	Case Qty.
AF099-2.5	2.5" x 180'	Excellent Adhesion	UL 181A-P/B-FX	16
AF099-3	3" x 180'			
AF975	3" x 150'	Cold-Weather Adhesive	UL 723	16
AF984-3	3" x 150'	Scrim Reinforced	UL 723	16



Duct Sealing Tapes

Item #	Size	Color	UL	Case Qty.
DC181-2MPT	2" x 360'	Sliver	UL 181B-FX	24
DC181-3MPT	3" x 360'			16

DC181 Flex Fix is for connecting, sealing, and patching flex duct. It is printed with the UL Listing to ensure every job is code compliant. It has excellent conformability to uneven surfaces, is easy to unwind and tear, and the color matches flex duct.

Insulation & Curb Gasket Tapes

Item #	Type	Size	Case Qty.
6-330	Cork	1/8" x 2" x 30'	12
6-9718	Foam		40
T1070	Curb Gasket	1/4" X 1" x 25'	Each



Lineset Tapes & Adhesives

Item #	Description	Size	Color	Case Qty.
326381	TPO Line Set	9" x 75'	White	4
VP410	Line Set Tape	2" x 100'	Black	24
INS-GLUE-08	Armaceil Adhesive	1/2 pt.	Gold	48

TPO Rolled Mastic Sealant is a membrane that provides UV protection and a white impact resistant surface for lineset protection.

VP410 is a UV-resistant SPVC tape used to wrap line sets, and seal the seams on closed cell sponge insulation.

Utility & Duct Tapes

Item #	Type	Color	Dimensions	Case Qty.
PC609-B	Utility Duct Tape	Black	2" x 180'	24
PC609-S		Silver		
PC857-BPT	UL 181B-FX Duct Tape	Black	2" x 180'	24
PC857-SMT		Silver		
105656	T-REX® Duct Tape	Black	2" x 90'	6
152506		Orange	2" x 105'	
242754		Camo	2" x 30'	
285807	No-Slip Tread Strips	Black	2" x 8"	3 pk.
232531	Caution Tape	Yellow	3" x 100'	16
6-733	Teflon Tape	White	1/2"	Each



Waterproof Repair Tapes

Item #	Brand	Dimensions
285987	T-REX®	4" x 5'



T-Rex® Waterproof Tape provides waterproof adhesion under wet and dry conditions. It is strong enough to temporarily stop a leak in a water pipe. Or, apply it underwater and push it into cracks and rough, dirty surfaces.

Electric & Phase Identification Tapes

Item #	Description	Size	Case Qty.
EV77B	Shurtape	3/4" x 66'	10
ET33	3M Super 33+		



Mastics

Duct Sealants

Item #	Color	Application	Size
CADS-1-B	Black	Standard Ductwork - Up to 10" WC	1 gal.
CADS-1-G	Gray		
CADS-1-W	White		
AIRSEAL 11	Gray	Commercial Ductwork - Up to 16" WC	1 gal.

CADS is a Fiber reinforced, water-based, duct sealant used to pressure seal all types of HVAC systems including metal and flex duct.

Airseal 11 is a premium water-based duct sealant providing commercial-grade strength. Exceptional flexibility and adhesion, with a high solids formulations.



Foil-Grip Mastic Tapes

Item #	Mfg. #	UL	Color	Size	Case Qty.
AFG-1402	304100	-	Silver	3" x 100'	16
AFG-1404	325804	UL 181B-FX			



Foil-Grip is a pressure sensitive duct joint and general purpose rolled sealant. It has superior tack for instant grab strength to galvanized metal, flex duct, PVC coated pipe, and PVC coated ductwork for an immediate airtight bond.


Mastic Brushes

Item #	Size	Case Qty.
B-503	2"	24
B-505	3"	12



Adhesives

Firestop Caulk & Construction Adhesive

Item #	Description	Color	Size	Case Qty.
81410	UL Intumescent Firestop Caulk	Red	10.1 oz. Tube	12
53503	Polyurethane Construction Adhesive	Gray	10.1 oz. Tube	12
7-200	Caulk Gun			



Silicone & Latex Caulk

Description	Item #	Color	Size	Case Qty.
Silicone Sealant Caulk	38000	Clear	9.5 oz. Tube	12
	38001	White		
	38003	Aluminum		
	37008	Clear	8 oz. Pressurized Can	
	37081	White		
37083	Aluminum			
Acrylic Latex Painter's Caulk	35701	White	9.5 oz. Tube	12

Spray Foams & Adhesive Aerosols



Item #	Description	Application Notes	Size	Case Qty.
635C10	Low-VOC Spray Adhesive	Fast tack, high bond insulation spray adhesive	12 oz.	12
33316	Multi-Purpose Polyurethane Spray Foam	Expands to 3X its original volume	12 oz. w/ Straw	12
33320	Spray Foam		20 oz. Genius Gun®	12
81212	Fire Block Spray Foam	Meets UL 723, ASTM E-84 and NFPA 255 Class A	12 oz. w/ Straw	12
323822	Insulation Edge Sealer	Encapsulates cut ends of insulation and ductwork. Ideal for spot repair.	14 oz.	12

Additional Hardware & Fasteners from



Sheet Metal Screws - Taper Point

Head Size	Length	100 Pack Item #	Bulk Pack Item #	Qty.
#8 (1/4" Hex)	1/2"	SP812	SPT812	500 pk.
	3/4"	SP834	SPT834	
	1"	SP81	SPT81	
	2"	SP82	SPT82	
#10 (5/16" Hex)	1/2"	HWSMS1012		500 pk.
	3/4"	HWSMS1034	HWSMST1034	
	1"	HWSMS101	HWSMST101	
White Register Screws - Taper Point				
#8 (1/4" Hex)	1-1/2"	SPR8112	SPRT8112	300 pk.
	2"	SPR82	SPRT82	200 pk.



Sheet Metal Screws - Self Tapping

Head Size	Length	100 Pack Item #	Bulk Pack Item #	Qty.
#8 (1/4" Hex)	1/2"	TEKHW812	TEKHT812	500 pk.
	3/4"	TEKHW834	TEKHT834	
	1"	TEKHW81	TEKHT81	
#10 (5/16" Hex)	1/2"	TEKHW1012	TEKHT1012	400 pk.
	3/4"	TEKHW1034	TEKHT1034	
	1"	TEKHW101	TEKHT101	
#12 (5/16" Hex)	1"	TEKHW121		
#14 (3/8" Hex)	1"	TEKHW141		



Wood / Drywall Screws

Item #	Size	Type	Pack Qty.
DWSBX6158	#6 x 1-5/8"	Black Oxide	100 pk.
WR6114	#6 x 1-1/4"	Carbon	100 pk.
WR6158	#6 x 1-5/8"	Steel w/ Zinc Coating	
WR83	#8 x 3"		
WR6	Steel/Zinc #6 Coarse Thread Assortment		335 pc.



Anchor Kits

Item #	Screw Size	Anchor Type	Included Drill Bit	Qty.
RD3HX	#8 x 1" Hex/Slotted			
K6HX	#10 x 1" Hex/Slotted	Red Collar	1/4" Carbide	100 pc.
K14CHX	#12 x 1-1/2" Hex/Slotted			
WDK8	#8 x 1-1/4" Phillips/Slotted	Zinc Walldriller	#2 Phillips Bit	50 pc.
WTKHX	#10 x 1-1/4" Hex/Slotted	Wall Twister	3/16" Carbide	100 pc.
FTG14	1/4" x 2-1/2" Phillips/Slotted	Flip Toggle	-	10 pc.



Flexible Duct from JPL

JPL's Silver Jacket flex is constructed with a spring steel wire helix, encapsulated in a 2-ply, air-tight inner core - UL-181 Class 1 Air Duct. 3/8" oversized inner core for ease of install. GREENGUARD Gold Certification.



AMBlue II Anti-Microbial flexible duct has an inner core treated with Agion® natural silver to resist microbial growth. GREENGUARD Indoor IAQ Certified as "Highly Mold Resistant."



Mobile Home Flex has an extra heavy-duty, UV-inhibited polyethylene vapor barrier for outdoor use with mobile homes.



Silver Flexible Duct - 25' Bags

Size	R6	R6 Pallet Qty.	R8	R8 Pallet Qty.
4"	FLEX-R6-04	144	FLEX-R8-04	75
5"	FLEX-R6-05	100	FLEX-R8-05	100
6"	FLEX-R6-06	100	FLEX-R8-06	80
7"	FLEX-R6-07	80	FLEX-R8-07	64
8"	FLEX-R6-08	64	FLEX-R8-08	64
9"	FLEX-R6-09	64	FLEX-R8-09	48
10"	FLEX-R6-10	48	FLEX-R8-10	48
12"	FLEX-R6-12	36	FLEX-R8-12	36
14"	FLEX-R6-14	36	FLEX-R8-14	24
16"	FLEX-R6-16	24	FLEX-R8-16	16
18"	FLEX-R6-18	16	FLEX-R8-18	16
20"	FLEX-R6-20	16	FLEX-R8-20	16

Antimicrobial - 25' Boxes

Size	R8 Antimicrobial	Pallet Qty.
4"	FLEX-R8-AMB-04	75
5"	FLEX-R8-AMB-05	100
6"	FLEX-R8-AMB-06	80
7"	FLEX-R8-AMB-07	64
8"	FLEX-R8-AMB-08	64
9"	FLEX-R8-AMB-09	48
10"	FLEX-R8-AMB-10	48
12"	FLEX-R8-AMB-12	36
14"	FLEX-R8-AMB-14	24
16"	FLEX-R8-AMB-16	16
18"	FLEX-R8-AMB-18	16
20"	FLEX-R8-AMB-20	16

Mobile Home - 25' Boxes

Size	R8 Mobile Home	Pallet Qty.
6"	FLEX-R8-MOBILE-06	80
7"	FLEX-R8-MOBILE-07	64
8"	FLEX-R8-MOBILE-08	64
9"	FLEX-R8-MOBILE-09	48
10"	FLEX-R8-MOBILE-10	48
12"	FLEX-R8-MOBILE-12	36
14"	FLEX-R8-MOBILE-14	24
16"	FLEX-R8-MOBILE-16	16

Ductboard, Liner & Wrap from



Owens Corning® QuietR® Duct Board is a rigid, resin bonded fibrous glass board with a reinforced aluminum foil (FRK) facing. It is bacterial and fungal growth resistant with an EPA registered biocide to help protect the air stream surface from microbial growth.

Item #	Size	Insulation	Mfg. #	Boards Per Pallet
DUCTBOARD-R4.2-SHEET	1" x 4' x 10'	R4.2 (475)	441732	48
DUCTBOARD-R6-SHEET	1.5" x 4' x 10'	R6 (800)	441743	32
DUCTBOARD-R8-SHEET	2" x 4' x 10'	R8 (1400)	441745	24



Duct Liner

Item #	Mfg. #	Dimensions	Insulation
DUCTLINER-1.5X48X50	634466	1.5" x 48" x 50'	R6
DUCTLINER-2X48X50	634831	2" x 48" x 50'	R8

Owens Corning® QuietR® Rotary Duct Liner is installed inside sheet metal ductwork or plenums with metal fasteners and adhesives.



Duct Wrap

Item #	Mfg. #	Dimensions	Insulation
DUCTWRAP-2.2X48X75	670734	2.2" x 48" x 75'	R6
DUCTWRAP-3X48X50	634831	3" x 48" x 50'	R8

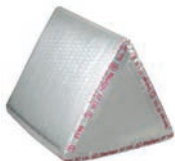


Owens Corning® SOFTR® Duct Wrap blanket-type glass fiber insulation is used to insulate rectangular and round ductwork. It is laminated to FRK vapor retarderfacing, with a 2" Stapling and taping flange.

Triangles & Mixing Boxes

R6 Ductboard Triangles: Pre-Assembled

Item #	Size
TRIANGLE-12X12X12	12" x 12" x 12"
TRIANGLE-16X16X16	16" x 16" x 16"
TRIANGLE-18X18X24	18" x 18" x 24"



R6 Ductboard Mixing Boxes: Pre-Assembled

Item #	Size
MIXINGBOX-16X16X24	16" x 16" x 24"
MIXINGBOX-20X20X24	20" x 20" x 24"



Attic Insulation

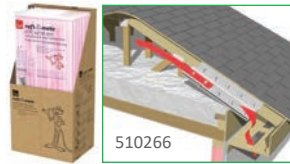
Blown-In Loose Fill Insulation



ProCat® machine
Available for Rent!



543516



510266



LOOSE FILL INSULATION

Item #	Description	Case/
LOOSE FILL INSULATION	ProCat® 33.5 lb. Insulation Bag	33
510266	raft-R-mate® Ventilation Baffles for Soffit Vents	75
543516	SmartCap® Attic Recessed Light Cover	50

Attic Tent® Insulated Access Covers



The Attic Tent® creates an air transfer barrier between the attic and living areas. It is designed to stop air infiltration between the home and attic, the most common medium for wasting costly home energy.

Item #	Dimensions
AT-1	22" x 54" x 7"
AT-2	25" x 54" x 7"
AT-4	25" x 54" x 13"
AT-5	30" x 60" x 13"

Duct Hanging & Fastening

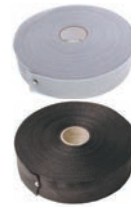
Metal Strap

Item #	Gauge	Width	Length
STRAP-PERFORATED-3/4"	28ga.	3/4"	100'
STRAP-METAL-1"	26ga.	1"	100'
STRAP-METAL-1.5"	26ga.	1.5"	100'



Nylon Webbed Strap

Item #	Color	Width	Length
STRAP-WEBBED-1.75" BLACK	Black	1-3/4"	300'
STRAP-WEBBED-1.75" SILVER	Silver		
STRAP-WEBBED-3" BLACK	Black	3"	
STRAP-WEBBED-3" SILVER	Silver		



Duct Saddles

Item #	Description	Case Qty.
DS3	12" Duct Saddle	200 pc.



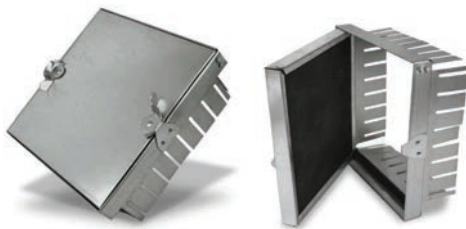
The Duct Saddle - The average duct system is only 57% efficient; use the Duct Saddle to stop kinking and sagging to improve ductwork airflow. This 12" saddle works with all types of strap - metal and webbed.

Duct Cable Ties

Item #	Length	Pack Qty.
36 IN DUCT TIES	36"	50pk.
48 IN DUCT TIES	48"	

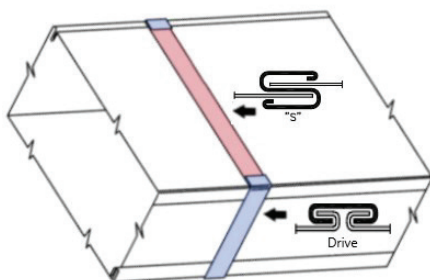


Duct Access Doors



Duct Board Access Doors with tab lock frame are used to access the inside of rectangular ductwork. Works in 1", 1½" and 2" duct board applications.

Item #	Size	Gauge	Qty.
ACCESSDOOR-08	8" x 8"	28ga.	6
ACCESSDOOR-10	10" x 10"	26ga.	6



Drive and "Flat S" Cleat - are the standard means of connecting two rectangular duct sections end-to-end. The Flat S is used on the bottom and top of duct (the long side) and the Drive Cleat is used on the left and right sides (the short side).



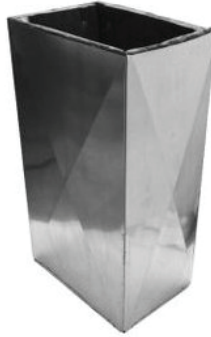
Drive Cleat & "Flat S" Cleat

Item #	Length	Gauge	Qty.
CLEAT-DRIVE-05	5'	26ga.	10
CLEAT-DRIVE-10	10'	26ga.	10
CLEAT-S-05	5'	26ga.	10
CLEAT-S-10	10'	26ga.	10

OEM-Matched Supply & Return Plenums

OEM Matched R6 Metal Return Plenums

Furnace or AHU	Cabinet Width	Item #	Length	Height x Depth
S8 & S9 Trane Furnace	A	PLENUM-RET-13X20X2	2'	13" x 20"
		PLENUM-RET-13X20X3	3'	
	B	PLENUM-RET-16X20X2	2'	16" x 20"
		PLENUM-RET-16X20X3	3'	
	C	PLENUM-RET-20X20X2	2'	20" x 20"
		PLENUM-RET-20X20X3	3'	
	D	PLENUM-RET-20X23X2	2'	20" x 23"
		PLENUM-RET-20X23X3	3'	
TEM Series AHUs	B	PLENUM-RET-17X19X2	2'	17" x 19"
		PLENUM-RET-17X19X3	3'	
	C	PLENUM-RET-19X22X2	2'	19" x 22"
TAM & GAM Series AHUs	A	PLENUM-RET-15X18X2	2'	15" x 18"
		PLENUM-RET-15X18X3	3'	
	B	PLENUM-RET-18X19X2	2'	18" x 19"
		PLENUM-RET-18X19X3	3'	
	C	PLENUM-RET-18X21X2	2'	18" x 21"
		PLENUM-RET-18X21X3	3'	



Plenums are capped on one end. They are boxed "knocked down" for ease of transport, and are ready to field assemble.

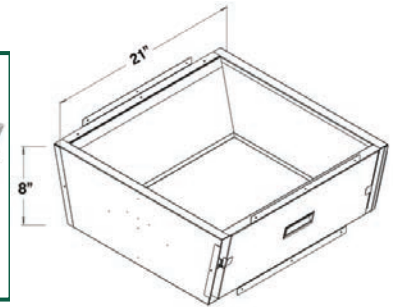
OEM Matched R8 Metal Supply Plenums

Coil or AHU	Cabinet Width	Item #	Length	Height x Depth	
4TXC & 4MXC Coils	A	PLENUM-SUP-14X20X3	3'	14" x 20"	
		PLENUM-SUP-14X20X4	4'		
	B	PLENUM-SUP-17X20X3	3'	17" x 20"	
		PLENUM-SUP-17X20X4	4'		
	C	PLENUM-SUP-20X20X3	3'	20" x 20"	
		PLENUM-SUP-20X20X4	4'		
	D	PLENUM-SUP-20X24X3	3'	20" x 24"	
		PLENUM-SUP-20X24X4	4'		
	4PXFH Slab Coils	001	PLENUM-SUP-21X24X3		21" x 24"
		003-5-7	PLENUM-SUP-21X30X3	3'	21" x 30"
		009	PLENUM-SUP-27X34X3		27" x 34"
	TEM Series AHUs	B	PLENUM-SUP-13X17X3	3'	13" x 17"
PLENUM-SUP-13X17X4			4'		
C		PLENUM-SUP-13X22X3	3'	13" x 22"	
TAM & GAM Series AHUs	A	PLENUM-SUP-15X15X3	3'	15" x 15"	
		PLENUM-SUP-15X15X4	4'		
	B	PLENUM-SUP-15X19X3	3'	15" x 19"	
		PLENUM-SUP-15X19X4	4'		
	C	PLENUM-SUP-15X21X3	3'	15" x 21"	
		PLENUM-SUP-15X21X4	4'		

Furnace to Coil Transitions

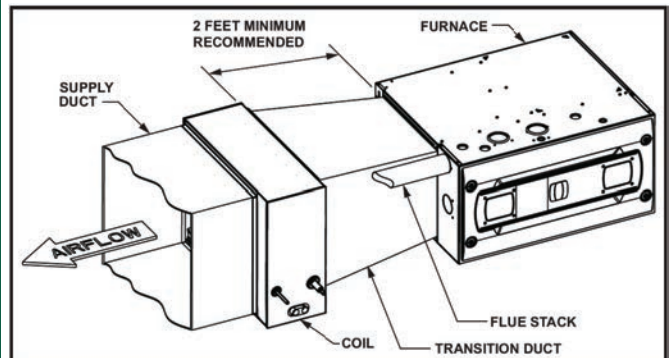
OEM Furnace to Box Coil Insulated Transitions

S8 & S9 Furnace	4TXC & 4MXC Coil Width	Item #	Furnace Opening Dimensions	Coil Opening Dimensions	Transition Length
A	A	SST-AA	14" x 21"	14.25" x 21"	8"
	B	SST-AB	14.25" x 21"	17.75" x 21"	
B	B	SST-BB	17.5" x 21"	17.75" x 21"	8"
	C	SST-BC	17.75" x 21"	21.25" x 21"	
C	D	SST-BD	17.75" x 21"	24.75" x 21"	8"
	C	SST-CC	21" x 21"	21.25" x 21"	
D	D	SST-CD	21.25" x 21"	24.75" x 21"	8"
	D	SST-DD	24.5" x 21"	24.75" x 21"	

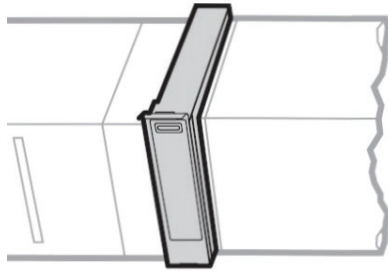


OEM Furnace to Slab Coil Insulated Transitions

S8 & S9 Furnace	4PXFH Coil Model	Item #	Furnace Opening	Coil Opening	Transition Length
A	001	TRANSITION-14X21-21X24	14" x 21"	21" x 24"	2'
	003-007	TRANSITION-14X21-21X30		21" x 30"	
B	001	TRANSITION-17X21-21X24	17" x 21"	21" x 24"	2'
	003-007	TRANSITION-17X21-21X30		21" x 30"	
	009	TRANSITION-17X21-27X34		27" x 34"	
C	003-007	TRANSITION-21X21-21X30	21" x 21"	21" x 30"	2'
	009	TRANSITION-21X21-27X34		27" x 34"	
D	009	TRANSITION-24X21-27X34	24" x 21"	27" x 34"	2'



Media Filter Box & Central Return Plenums

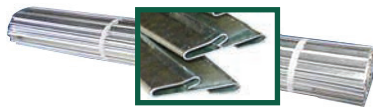
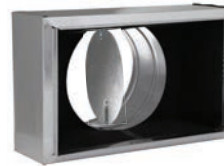


Media Filter Box Return Plenums are designed to make a return duct connection to popular wholesale media air filter cabinets.

Item #	Fits Honeywell Filter Cabinet	Fits Aprilaire Filter Cabinet	Length	Height x Depth
PLENUM-RET-16X20X2	F1001620	1110	2'	16" x 20"
PLENUM-RET-16X20X3			3'	
PLENUM-RET-16X25X2	F100F1625	1410, 2410, 2416	2'	16" x 25"
PLENUM-RET-16X25X3			3'	
PLENUM-RET-20X20X2	F100F2020	1310, 2310	2'	20" x 20"
PLENUM-RET-20X20X3			3'	
PLENUM-RET-20X25X2	F100F2025 F100F2044	1210, 1910 2210, 2216	2'	20" x 25"
PLENUM-RET-20X25X3			3'	
PLENUM-RET-20X30X2	For Central Returns		2'	20" x 30"
PLENUM-RET-20X30X3			3'	

DucTite® R6 Register Box w/ Collar & Bootrail Flange

Item #	Grille Size	Collar Size	Case Qty.
602R6844	8" x 4"	4"	40
602R6886	8" x 8"	6"	20
602R61065	10" x 6"	5"	27
602R61066		6"	
602R61086	10" x 8"	6"	24
602R61087		7"	
602R61088	8"	16	
602R610107	7"		
602R610108	8"	12	
602R610109	9"		
602R612129	9"	10	
602R6121210	10"		
25" Bootrail Item #			Case Qty.
MP-SOR			60



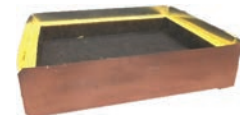
Register Boxes

Metal R6 Supply Register Box w/ Collar & Damper - 4" Tall

Item #	Grille Size	Collar Size	Case Qty.
BOX-0804-04-D	8" x 4"	4"	42
BOX-0804-05-D		5"	24
BOX-1006-05-D	10" x 6"	5"	25
BOX-1006-06-D		6"	25
BOX-1006-07-D	10" x 8"	7"	20
BOX-1008-06-D		6"	12
BOX-1008-07-D	7"	18	
BOX-1008-08-D	8"	12	
BOX-1010-07-D	10" x 10"	7"	14
BOX-1010-08-D		8"	14
BOX-1206-06-D	12" x 6"	6"	24
BOX-1206-07-D		7"	20
BOX-1206-08-D	8"	20	
BOX-1208-08-D	12" x 8"	8"	14
BOX-1208-09-D		9"	12
BOX-1212-08-D	12" x 12"	8"	10
BOX-1212-09-D		9"	10
BOX-1212-10-D	10"	10	

"No Hole" Return Box: Metal Sides with Ductboard Flat Top - 6" Tall

Item #	Grille Size
BOX-1224-DB	12" x 24"
BOX-1425-DB	14" x 25"
BOX-1625-DB	16" x 25"
BOX-2020-DB	20" x 20"
BOX-2025-DB	20" x 25"
BOX-2030-DB	20" x 30"



Ductboard Top Return Boxes allow for quick installation of a top-mounted ductboard collar. The opening of the box is "blade edge" with no flange.

"No Hole" Supply-Return Box: Metal Sides w/ Flat Top - 9" Tall

Item #	Grille Size	Case Qty.
BOX-0804	8" x 4"	24
BOX-0808	8" x 8"	12
BOX-1006	10" x 6"	16
BOX-1008	10" x 8"	8
BOX-1010	10" x 10"	10
BOX-1206	12" x 6"	12
BOX-1208	12" x 8"	8
BOX-1212	12" x 12"	6
BOX-1406	14" x 6"	12
BOX-1408	14" x 8"	8



No-Hole Boxes allow for quick field installation of a ductboard collar - either out of the side or the top. The downward facing internal flange is ideal for attaching supply or return grilles.

Collars & Dampers

Pre-Assembled Snapped Collars with Removable Damper - 30ga.

Item #	Duct Size	Case Qty.
COLLAR-SN-04-D	4"	40
COLLAR-SN-05-D	5"	32
COLLAR-SN-06-D	6"	48
COLLAR-SN-07-D	7"	40
COLLAR-SN-08-D	8"	32
COLLAR-SN-09-D	9"	24
COLLAR-SN-10-D	10"	20
COLLAR-SN-12-D	12"	12
COLLAR-SN-14-D	14"	12
No Damper Models		
COLLAR-SN-16	16"	7
COLLAR-SN-18	18"	7
COLLAR-SN-20	20"	6



Unsnapped (Nested) Collars - 30ga.



Item #	Duct Size	Case Qty.
COLLAR-UN-04	4"	20
COLLAR-UN-05	5"	20
COLLAR-UN-06	6"	20
COLLAR-UN-07	7"	20
COLLAR-UN-08	8"	20
COLLAR-UN-09	9"	20
COLLAR-UN-10	10"	20
COLLAR-UN-12	12"	20
COLLAR-UN-14	14"	20
COLLAR-UN-16	16"	20
COLLAR-UN-18	18"	20

Unsnapped Collars are unassembled, ready to snap together in the field. The "nested" case provides storage savings compared to pre-built collars.

Heavy-Duty 24ga. Press-On Collar w/ Damper

Item #	Duct Size	Case Qty.
COLLAR-PR-04-D	4"	24
COLLAR-PR-05-D	5"	20
COLLAR-PR-06-D	6"	20
COLLAR-PR-07-D	7"	18
COLLAR-PR-08-D	8"	22
COLLAR-PR-09-D	9"	20
COLLAR-PR-10-D	10"	16
COLLAR-PR-12-D	12"	16
COLLAR-PR-14-D	14"	12
No Damper Models		
COLLAR-PR-16	16"	8
COLLAR-PR-18	18"	8
COLLAR-PR-20	20"	8



Round Dampers - 26ga.

Item #	Duct Size	Case Qty.
DAMPER-04	4"	50
DAMPER-05	5"	50
DAMPER-06	6"	50
DAMPER-07	7"	50
DAMPER-08	8"	50
DAMPER-09	9"	50
DAMPER-10	10"	50
DAMPER-12	12"	25
DAMPER-14	14"	25
DAMPER-16	16"	25
DAMPER-18	18"	25
DAMPER-20	20"	25

Heavy-Duty Press-On Collars are made from one-piece 24-gauge metal, with a welded seam for added strength and low leakage. 1" flange, with 1" x 1/8" adhesive gasket. Rated up to 10" w.c.

Flex Duct Connectors

Item #	Duct Size	Case Qty.
CONNECTOR-04	4"	20
CONNECTOR-05	5"	20
CONNECTOR-06	6"	20
CONNECTOR-07	7"	20
CONNECTOR-08	8"	20
CONNECTOR-09	9"	20

Item #	Duct Size	Case Qty.
CONNECTOR-10	10"	20
CONNECTOR-12	12"	20
CONNECTOR-14	14"	20
CONNECTOR-16	16"	20
CONNECTOR-18	18"	20
CONNECTOR-20	20"	20



Reducers



Item #	Duct Size	Case Qty.
REDUCER-0403	4" x 3"	12
REDUCER-0504	5" x 4"	12
REDUCER-0604	6" x 4"	12
REDUCER-0605	6" x 5"	12
REDUCER-0705	7" x 5"	12
REDUCER-0706	7" x 6"	12
REDUCER-0806	8" x 6"	12
REDUCER-0807	8" x 7"	12

Item #	Duct Size	Case Qty.
REDUCER-0907	9" x 7"	6
REDUCER-0908	9" x 8"	6
REDUCER-1008	10" x 8"	6
REDUCER-1009	10" x 9"	6
REDUCER-1210	12" x 10"	6
REDUCER-1412	14" x 12"	6
REDUCER-1614	16" x 14"	6
REDUCER-1816	18" x 16"	1
REDUCER-2018	20" x 18"	1

Wyes



Item #	Duct Size	Case Qty.
WYE-04-03-03	4" x 3" x 3"	50
WYE-05-04-04	5" x 4" x 4"	30
WYE-06-04-04	6" x 4" x 4"	30
WYE-06-05-05	6" x 5" x 5"	28
WYE-07-05-05	7" x 5" x 5"	24
WYE-07-06-04	7" x 6" x 4"	20
WYE-07-06-05	7" x 6" x 5"	20
WYE-08-06-05	8" x 6" x 5"	16
WYE-08-06-06	8" x 6" x 6"	16

Item #	Duct Size	Case Qty.
WYE-08-07-04	8" x 7" x 4"	16
WYE-08-07-05	8" x 7" x 5"	16
WYE-08-07-06	8" x 7" x 6"	14
WYE-09-07-05	9" x 7" x 5"	12
WYE-09-07-06	9" x 7" x 6"	12
WYE-09-07-07	9" x 7" x 7"	12
WYE-09-08-06	9" x 8" x 6"	12
WYE-09-08-07	9" x 8" x 7"	10
WYE-10-08-06	10" x 8" x 6"	10
WYE-10-08-07	10" x 8" x 7"	8

Item #	Duct Size	Case Qty.
WYE-10-08-08	10" x 8" x 8"	8
WYE-10-09-06	10" x 9" x 6"	10
WYE-10-09-07	10" x 9" x 7"	8
WYE-10-09-08	10" x 9" x 8"	8
WYE-12-09-08	12" x 9" x 8"	6
WYE-12-09-09	12" x 9" x 9"	5
WYE-12-10-08	12" x 10" x 8"	6
WYE-12-10-10	12" x 10" x 10"	4
WYE-14-12-10	14" x 12" x 10"	2
WYE-14-12-12	14" x 12" x 12"	2



Item #	Duct Size	Length	Gauge	Bundle Qty.
SNAPLOCK-04	4"			
SNAPLOCK-05	5"			
SNAPLOCK-06	6"			
SNAPLOCK-07	7"	5'	30 ga.	10
SNAPLOCK-08	8"			
SNAPLOCK-09	9"			
SNAPLOCK-10	10"			

Item #	Duct Size	Length	Gauge	Bundle Qty.
SNAPLOCK-12	12"			
SNAPLOCK-14	14"	5'	28 ga.	10
SNAPLOCK-16	16"			
SNAPLOCK-18	18"	3'	26 ga.	10
SNAPLOCK-20	20"			

Snaplock Pipe



Elbows turn-adjust from straight to 90°

Item #	Duct Size	Gauge	Case Qty.
ELBOW-04	4"		24
ELBOW-05	5"	30 ga.	24
ELBOW-06	6"		24
ELBOW-07	7"		12

Item #	Duct Size	Gauge	Case Qty.
ELBOW-08	8"		12
ELBOW-09	9"	30 ga.	12
ELBOW-10	10"		12
ELBOW-12	12"	28 ga.	12

Item #	Duct Size	Gauge	Case Qty.
ELBOW-14	14"	28 ga.	4
ELBOW-16	16"	26 ga.	4
ELBOW-18	18"		4
ELBOW-20	20"	24 ga.	4

Elbows

Backdraft Dampers

Backdraft dampers are designed with galvanized steel collars and have lightweight aluminum damper blades. They are spring-loaded for positive closure. The collar is constructed of 27ga. galvanized steel, with a galvanized aluminum blade and a foam seal.

Item #	Duct Size	Item #	Duct Size	Item #	Duct Size
CAR100	4"	CAR175	7"	CAR315	12"
CAR125	5"	CAR200	8"	CAR355	14"
CAR150	6"	CAR250	10"	CAR400	16"



Thermofin® ("T-Fin") & Non-Insulated Duct

T-Fin® air duct is a **semi-rigid** flexible aluminum pipe. This Class 0 air duct used as supply, return or exhaust. It allows extreme compression without making it harder to pull it back out for installation.

Item #	Mfg. #	Duct Size	Length	Compressed Length	End Style	Max Static	Case Qty.
TFIN-03	12903	3"	10'	23"	Two Plain Ends	6" w.c.	20
TFIN-04	12911	4"	10'	23"		6" w.c.	12
TFIN-05	12822	5"	8'	23"	One Crimped, One Plain	12" w.c.	7
TFIN-06	12823	6"	8'	23"		12" w.c.	4
TFIN-07	12824	7"	8'	23"		12" w.c.	3
TFIN-08	12825	8"	8'	23"		12" w.c.	4
TFIN-10	12827	10"	8'	23"	12" w.c.	2	
TFIN-12	12828	12"	8'	23"	8" w.c.	1	



MNI25 is a UL-181 listed and labeled Class 1 **flexible** non-insulated air connector. It is used as a supply, return, and exhaust duct in low to medium pressure AC systems and exhaust applications. Constructed with a spring steel wire helix, encapsulated in a polyester, aluminum foil, and polyester tri-laminate, with raw ends.

Item #	Duct Size	Length	Max Static	Case Qty.	Item #	Duct Size	Length	Max Static	Case Qty.	Item #	Duct Size	Length	Max Static	Case Qty.
MNI25-03	3"	25'	10" w.c.	12	MNI25-08	8"	25'	10" w.c.	4	MNI25-14	14"	25'	10" w.c.	4
MNI25-04	4"	25'	10" w.c.	12	MNI25-09	9"	25'	10" w.c.	4	MNI25-16	16"	25'	6" w.c.	4
MNI25-05	5"	25'	10" w.c.	4	MNI25-10	10"	25'	10" w.c.	4	MNI25-18	18"	25'	6" w.c.	4
MNI25-06	6"	25'	10" w.c.	4	MNI25-12	12"	25'	10" w.c.	4	MNI25-20	20"	25'	6" w.c.	4
MNI25-07	7"	25'	10" w.c.	4										



Dryer Venting

Item #	Stud Size	Exterior H x W x D	Interior H x W x D	Direction	Case Qty.
DB-350	2" x 4"	21" x 12.5" x 4.4"	18.3" x 9.5" x 3.5"	Upward	6
DB-480	2" x 6" (2" x 4" with furring strips)	23.5" x 17.4" x 5.2"	20.5" x 14" x 4.3"	Up / Down / Sideways	5

The **Telescoping Dryer Duct** allows for quick and easy ducting from the dryer box to above the ceiling. It extends from 65" to 188" to meeting various height requirements.



Item #	Duct Size	Telescoping Length	Collar Size
DV-DVTA	6" x 2.5"	65" - 118"	4"

The **Dryerbox®** is sized to fit within 16" or 24" center studs. It includes a "duct support tab" that assists in maintaining the ideal penetration length of 2" for Snaplock rigid conduit.

- Locate the dryer right up against the wall
- Flex is protected from getting squished
- Doubles as gas connection receptacle
- Meets code requirements as a clean-out
- Surface is paintable, no masking needed
- Model DB-480 accommodates pedestal dryers and downward venting



Wallstack Duct



Item #	Description	Dimensions	Case Qty.
WALLSTACK-DUCT-60	Rectangular Wall Stack Duct	60" x 3.25" x 10"	12
WALLSTACK-BOOT-ST	Straight Wallstack Boot w/ 6" Collar		12
WALLSTACK-BOOT-90	90° Wallstack Boot w/ 6" Collar	3.25" x 10" x 6" Round	12
WALLSTACK-BOOT-END	Center End Wallstack Boot w/ 6" Collar		12
WALLSTACK-ENDCAP	Wallstack Endcap	3.25" x 10"	12



BOOT-ST



BOOT-90



BOOT-END



ENDCAP

Wallstack is low profile, rectangular metal duct. At 3-1/4" x 10", it is designed to fit in a wall between the studs, or in a ceiling between the joists. It is often used for venting kitchen range hoods.

Soffit / Eave Vents

Plastic Fixed Louver Vents



Item #	Duct Size	Louver Grid Size	Color	Mount	Case Qty.	Application
110811	4"	1/4" x 1/4"	White	Snap-On Ring	12	Fresh Air Intake or Exhaust (not dryer)
110899	6"	1/2" x 1/2"				
110972	4"	1/4" x 1/4"	Brown	Snap-On Ring	12	
111008	6"	1/2" x 1/2"				

Wall Vents

Aluminum Wall Vents



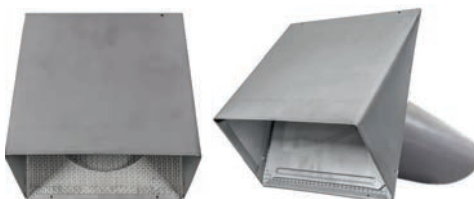
Item #	Duct Size	Flapper	Screen	Gauge	Mount	Case Qty.	Application
110557	4"	Yes	No	30ga.	Flush	24	Exhaust (Including Dryer)
110271					11.5" Neck	12	
110786	4"	Yes	Yes	30ga.	Flush	24	Exhaust (Not Dryer)
110684					11.5" Neck	12	

Plastic Wall Vents



Item #	Duct Size	Louver Type	Color	Mount	Case Qty.	Application
111149	3" - 4"	Free-Swinging	White	Flush	24	Exhaust (Including Dryer)
110840	6"				12	
111151	3" - 4"	Free-Swinging	Brown	Flush	24	
110844	6"				12	

Heavy-Duty Galvanized Wall Vents



Item #	Duct Size	Flapper	Screen	Mount	Gauge	Case Qty.	Paintable	Application
112211	4"	Yes	1/4" Grid (removable)	11" Tail	26ga.	12	Yes	Exhaust (Including Dryer)
112524	6"	Yes (removable)	1/4" Grid (removable)	11" Tail	26ga.	6	Yes	Fresh Air Intake or Exhaust
112323	8"	Yes (removable)	1/4" Grid (removable)	11" Tail	26ga.	6		
011029	10"	Yes (removable)	1/4" Grid (removable)	11" Tail	26ga.	1	No	

Furnace Concentric Vents

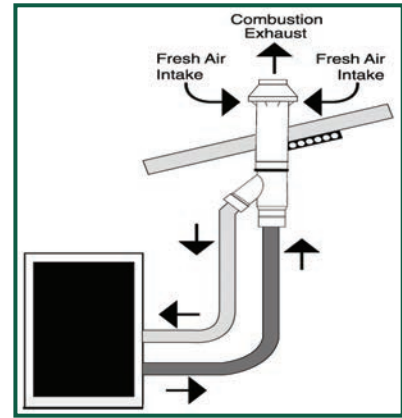
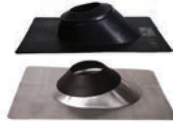
Hi-Efficiency Condensing Furnaces (90%+) require two-pipe venting - one for intake, and one for exhaust. PVC piping is used, since it does not corrode from the acidic condensation.

Concentric Vents make it easier to have a two pipe installation for high efficiency furnaces. These vents only require one hole through the wall or roof, instead of two.

Item #	Intake & Vent I.D.	Intake Pipe O.D.	Assembly Length	Intake Pipe Length
P4D03VK	3"	4.5"	39.75"	31.9"

Concentric Roof Flashings

Item #	Pipe I.D.	Flashing Type	Roof Pitch	Collar Type	Base Size	Case Qty.
530-11911	4"	Thermoplastic	Up to 12/12	No-Caulk	16" x 12"	12
5-11879		28ga. Galv. Steel	12/12	Elastomer	15" x 12"	



Sidewall Termination Kit

Item #	Works With
BAYVENT200B	2", 2-1/2", or 3" vent systems

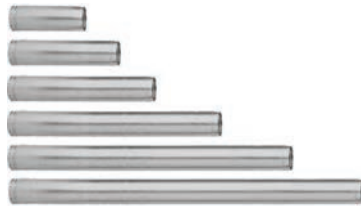


Furnace B-Vent by AMERIVENT.

B-Vent Pipe is used for venting appliances that use natural gas or liquid propane. It has double wall construction. The inner pipe heats quickly, containing the flue gases inside. The airspace between the inner and outer pipe provides insulation, keeping the warmer flue gases on the rise. Although a large portion of the flue gas is composed of water vapor, B-Vent carries it out of the structure before it can condense. Featuring Snap-Lock joints that are quick and easy to disconnect, this system is lightweight, and is available in large sizes, adjustable components, and multi-story Type BW venting installation.

Round Pipe

Item #	Pipe I.D.	Length	Case Qty.
4E12	4"	12"	6
4E18	4"	18"	6
4E24	4"	24"	6
4E3	4"	36"	6
4E4	4"	48"	6
4E5	4"	60"	6



Adjustable Length Pipe slides over top of round pipe, allowing for an adjustable addition of 3" to 10"

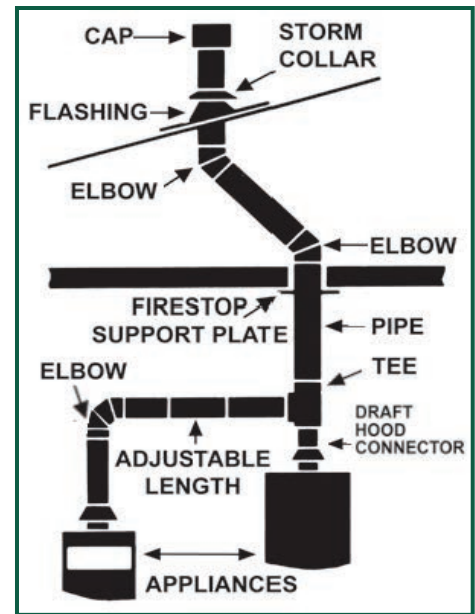
Item #	Pipe I.D.	Length	Adjustment Range	Case Qty.
4E12A	4"	12"	3" to 10"	6



Draft Hood Connector

connects B-Vent directly to an appliance. The inlet can be shaped to fit oval outlets.

Item #	Pipe I.D.	Dimensions	Case Qty.
4EDC	4"	6.6" Overall 2.9" Flexible Inlet	6



Storm Collars & Rain Caps

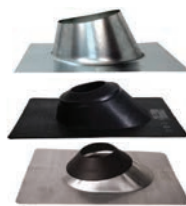
Item #	Pipe I.D.	Description	Case Qty.
4ESC	4"	Storm Collar	12
4ECW	4"	Ventilation / Rain Cap	12



The **Rain Cap** can be used as a ventilation cap for both standard exhaust and B-Vent termination. The ports and baffles keep rain and debris out.

Elbows & Adapters

Item #	Type	Pipe I.D.	Case Qty.
4EAL	0° to 90° Elbow	4"	6
4EUA-F	Female Adapter	4"	6
4EUA-M	Male Adapter	4"	6
4EIX5	4" to 5" Adapter	4"	6



B-Vent Roof Flashings

Item #	Pipe I.D.	Type	Roof Pitch	Dimensions L x W x H	Case Qty.
4EF	4"	Metal	0/12 to 6/12	16.4" x 13.8" x 5"	12
4EF12			6/12 to 12/12	17.9" x 15" x 6.8"	12
530-11911	4"	No-Caulk Plastic	Up to 12/12	16" x 12"	12
5-11879	4"	No-Caulk Steel	Up to 12/12	15" x 12"	12

Roof Vents



Plastic Roof Vent with Flashing

Item #	Duct Size	Flapper	Screen	Mount	Case Qty.	Application
PBRV04	4"	Yes	Steel Mesh (removable)	Collar	10	Exhaust (Including Dryer)
PBRV06	6"				8	



Heavy-Duty Metal Roof Vent with Flashing

Item #	Duct Size	Flapper	Screen	Mount	Case Qty.	Application
011756	4"	Yes	1/4" x 1/4" (removable)	Collar	1	Exhaust (Including Dryer)
011772	6" - 8"	Yes	1/4" x 1/4" (removable)	Flush	1	
011774	10"				1	



Tapered Roof Jack With Vent Cap

Item #	Duct Size	Roof Pitch	Flapper	Screen	Case Qty.
ROOFJACK-04-9/12	4"	9 / 12	No	No	10
ROOFJACK-06-9/12	6"	9 / 12	No	No	8
ROOFJACK-08-9/12	8"	9 / 12	No	No	5



Many other styles and sizes are available

Rooftop Lineset Penetration Flashings

Portals Plus Alumi-Flash is compatible with all types of roof systems and makes pitch pans obsolete. The flexible EPDM rubber caps eliminate roof leaks because penetrations are allowed to expand, contract, and vibrate independently of the water proofing. The caps are molded EPDM rubber that resist degradation from oxidation or UV exposure.

Portals Plus Alumi-Flash

Item #	Base Diameter	Base Height	Cap Outlets Fits Up To	Case Qty.
22075	14"	4"	(2) 3/8" - 1" Pipes (2) 1" - 2" Pipes	5

Fresh Air Ventilation



The **Fresh-Air Filter Rack** is a simple way to pre-filter fresh air before it reaches the return air ductwork. It has a 6" collar on one side, and a ductboard back on the other to accommodate many duct sizes.

In Line Fresh-Air Filter Rack

Item #	Dimensions H x W x D	Filter Size	Insulation	Collar Size
12X12FAFRERY	12" x 12" x 6"	12" x 12" x 2" (Nominal)	R8 with a Ductboard Back	6"



The **Y8150A1017** Fresh Air Ventilation System provides fresh air to a home. The control operates a fresh air intake damper and, when necessary, activates the main HVAC blower to efficiently meet ASHRAE ventilation rates.

Fresh Air Ventilation System

Item	Description	Replacement Actuator
EARD6TZ	6" Round Fresh Air Damper	M847D-VENT
EARD8TZ	8" Round Fresh Air Damper	
W8150A1001	Fresh Air Ventilation Control	
Y8150A1017	Fresh Air Ventilation Kit - Includes EARD6TZ damper, W8150A1001 control, and a 24v transformer	



The **FIN-180P-HW** can be used for fresh air, exhaust, or transfer. It has a hi-efficiency ECM motor with selectable CFM. It has a backdraft damper, metal pre-filter, and a 2" rail for an additional filter. Five preset modes provide the perfect setting for local conditions. Onboard algorithms select the best time of day for ventilation, takes advantage of blower usage, and employs outdoor temperature and humidity limits.

Fresh Air Supply Fan

Item #	Voltage	Dimensions H x W x L	CFM @ .2 w.g.	Optional Filter	Collar Size
FIN-180P-HW	115v Hard Wired	10" x 10.25" x 14.75"	30 - 180 Selectable	10" x 10" x 2"	6"

Exhaust / Intake Grilles

Item #	CFM	Collar Size	Grille Diameter
BOR-100	15 - 100	3-1/8"	5-1/2"
BOR-150	45 - 235	5-1/8"	8"

White plastic air grille for residential and commercial applications. All models have an adjustable central valve to regulate the airflow. Suitable for both supply and exhaust applications.



Inline Mixed-Flow Fans

Model	Duct Size	Material	Nom. RPM	Volts	Max. CFM	Max. Static Pressure	Max. Temp.	Height & Width	Length	Speed Control
TD-100	4"	ABS Plastic	2516	120v	101	0.4"	104°F	5-15/16"	9-1/8"	2727.1
TD-125	5"		2146	120v	197	0.55"	104°F	7-3/8"	10-3/16"	2727.1
TD-150	6"		2289	120v	293	1.15"	140°F	8-3/8"	11-5/8"	2727.1
TD-200	8"	Steel w/ Epoxy Coating	2781	120v	538	1.625"	104 F	9-3/16"	11-7/8"	2727.1
TD-250	10"		3200	115v	754	2.53"	140°F	11-7/16"	15-3/16"	2727.1
TD-315	12.4"		2500	115v	1050	2.95"	140°F	14"	17-11/16"	2727.1
TD-355	14"		1536	115v	2089	1.0"	140°F	17-3/4"	1/-11/16"	2727.1
TD-400	16"		1559	115v	3127	1.2"	140°F	19-3/8"	21-1/2"	2828.1

TD Fans have a powerful motor with a mixed flow impeller. This enables the fans to deliver high airflow with minimum noise generation against high static pressures. The unique support brackets allow the unit to be fitted or removed without dismantling the adjacent ducting, making install and service easy.



New Construction Bathroom Fans by **BROAN**

Economy Series

Housing Rough Kit

Item #	Dimension H x W x D	Duct Size	Case Qty.
6884H	3.7" x 7.25" x 7.5"	4"	18
1667H		3"	6



Motor - Blade - Grille Finish Kit

Item #	CFM	Sones	Voltage	Grille Size	Energy Star	Case Qty.
1688F	50	4.0	120v	9" x 9.25"	No	6
1671F	70	6.0				

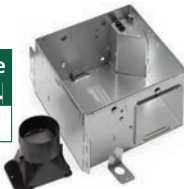


Flex Series

Flex Series® fans have foldable mounting ears, a new damper, and tighter housing to decrease air leakage. It has quiet performance, with enough sound to know the fan is on. TrueSeal™ Dampers reduce air leakage, and the EzDuct™ connector can be installed from the room side, with no attic access required.

Housing Rough Kit

Item #	Dimension H x W x D	Duct Size	Case Qty.
A000HFNF	5.75" x 9.25" x 10"	4"	4



Motor - Blade - Grille Finish Kit

Item #	CFM	Sones	Voltage	Grille Size	Energy Star	Case Qty.
AE80BF1	80	1.2	120v	11.25" x 12"	Yes	4



New Construction Project Packs provide the housing for the fan separately from the grille and motor. This allows the contractor to install the housing "can," without worrying about damaging the fan and grille. Once all construction is complete, the motor/blade/grille kit is installed to finish the trim-out.



Bathroom Fans - Retrofit

Flex DC™ Series Fan with Selectable CFM



Item #	Features	CFM	Sones	Voltage	Grille Size	Housing Size H x W x D	Duct Size	Energy Star
AE50110DC	Fan Only	50 - 80 - 110	0.3 - 0.4 - 0.9	120v	11.5" x 12"	5.75" x 9.25" x 10"	4"	Yes
AE50110DCL	Fan & Light							

Flex DC™ Fans allow for field selection between 50, 80 or 110 CFM. Retrofit installations can be done entirely from the room-side – no attic access required. They have a plug in, permanently lubricated, brushless DC motor – engineered for continuous operation. They can be installed in a wall if mounted 8 ft. or more above the floor.

Lo-Profile DC Series Fan with Selectable CFM



Item #	Features	CFM	Sones	Voltage	Grille Size	Housing Size H x W x D	Duct Size	Energy Star
LP510RS	Fan Only	50 - 80 - 100	0.3 - 0.4 - 1.2	120v	13" x 13.75"	3.4" x 10.75" x 10.75"	4" Oval	Yes
LP510RSL	Fan & Light							

Lo-Profile DC Fans are narrow enough to be installed in a wall between 2x4 studs. The built-in humidity sensor automatically turns the fan to high speed when increases in humidity are detected. This fan features TRUE CFM™ - the fan will not lose CFM performance regardless of how complicated the ducting. This bath fan meets ASHRAE 62.2 and is ENERGY STAR® certified.

Fan - Light - Heater Combo



Item #	Features	CFM	Sones	Voltage	Grille Size	Housing Size H x W x D	Duct Size	Energy Star
BHFLED80	Fan - LED Light - Heater	80	1.5	120v	9.75" x 16.25"	5.75" x 8.25" x 14.25"	4"	No
P3RW	3-Function Rocker Switch Wall Control. Three, independent, 120v 15a rocker switches. Can be used in a 15a or 20a circuit. Fits single-gang box. For use with all Broan fans and heaters within amp rating.							

Broan® PowerHeat™ has a 1300-watt heater for instant heat when you want it. It features an integrated dimmable LED with color adjustable CCT lighting; Choose between warm white (2700K), bright white (3500K), and daylight (5000K) color options. LED Dimmable Lighting may be used as a nightlight with a separate dimmer switch.

Hi-Capacity / Commercial Fans



Model	Type	CFM	Sones	Grille Size	Housing Size H x W x D	Duct Size	Energy Star
L100E	Ceiling	130	.3	14" x 14"	11.75" x 12.25" x 12.25"	8"	Yes
L150E	Ceiling	200	1.0	14" x 14"	11.75" x 12.25" x 12.25"	8"	Yes
L200E	Ceiling	230	1.3	14" x 14"	11.75" x 12.25" x 12.25"	8"	Yes
L250E	Ceiling	270	1.5	14" x 14"	11.75" x 12.25" x 12.25"	8"	Yes
L300E	Ceiling	310	2.5	14" x 14"	11.75" x 12.25" x 12.25"	8"	Yes
MG1	Optional Metal Grille						
RD1	1 - 3 Hour Radiation Damper with 212°F fusible Link. 3.62" H x 12.5" W x 12.5" D						

RD1 / RD2



Model	Type	CFM	Sones	Grille Size	Housing Size H x W x D	Duct Size	Energy Star
L400	Ceiling	434	2.3	14" x 23.25"	11.75" x 12.25" x 21.5"	4.5" x 18"	No
L500	Ceiling	514	3.3	14" x 23.25"	11.75" x 12.25" x 21.5"	4.5" x 18"	No
L700	Ceiling	701	4.7	14" x 23.25"	11.75" x 12.25" x 21.5"	4.5" x 18"	No
RD2	1 - 3 Hour Radiation Damper with 212°F fusible Link. 3.62" H x 12.5" W x 21.75" D						

Commercial Rooftop Exhaust Fans

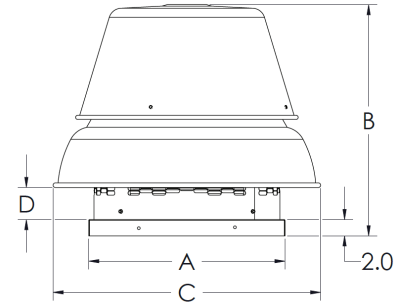
The **SDBD Centrifugal Downblast Roof Exhaust Fans** are generally used to exhaust air from all types of commercial and institutional buildings such as hospitals and health care facilities, schools, recreational buildings, machinery and equipment rooms, offices, retail stores and similar applications.

Model SDBD direct drive fans are designed to exhaust air up to 4,980 CFM in high static pressure applications to 2-1/4" w.g. The spun aluminum exterior provides an attractive appearance. The backward inclined wheel with its higher static pressure capability makes this unit suitable for either ducted or non-ducted applications. Its roof mounting permits location near the area to be ventilated, allowing short duct runs and more efficient operation.



Direct Drive Exhaust Fans - Downblast - 115v/1/60

Item Number	Size	Motor		Max CFM @ 0 w.g.	Dimensions				Roof Opening	Curb O.D.	Damper O.D.
		H.P.	RPM		A	B	C	D			
SDBD06JH1AS	6			351	18"	14.13"	22.32"	1.5"	13.5"	16.5"	12"
SDBD07JH1AS	7	1/10	1550	476	18"	16.82"	22.32"	4.13"	13.5"	16.5"	12"
SDBD08JH1AS	8			862	18"	20.5"	22.32"	4.13"	13.5"	16.5"	12"
SDBD10PH1AS	10	1/3	1625	1348	18"	20.5"	22.32"	5.13"	13.5"	16.5"	12"
SDBD12QH1AS	12	1/2	1625	1885	20"	27.32"	27.63"	3.88"	15.5"	18.5"	14"
SDBD14MM1AS	14	1/4	1075	2216	20"	27.32"	27.63"	3.88"	15.5"	18.5"	14"
SDBD15QM1AS	15	1/2	1150	2683	24"	28"	32.88"	4"	19.5"	22.5"	18"
SDBD16QM1AS	16	1/2	1150	3330	24"	28"	32.88"	4"	19.5"	22.5"	18"



The **STXD-RHUL Centrifugal Upblast Roof Exhaust Fans** are also direct drive fans. They are UL762 listed as power ventilators for restaurant exhaust appliances, and are designed to eject contaminated or grease-laden air. Typical applications include restaurant hoods and similar kitchen exhaust ventilation, fume and smoke removal, laboratory fume hood exhaust and chemical process exhaust.

Direct Drive Exhaust Fans - Upblast - 115v/1/60

Item Number	Size	Motor		Max CFM @ 0 w.g.	Dimensions				Roof Opening	Curb O.D.	Damper O.D.
		H.P.	RPM		A	B	C	D			
STXD10RHULPH1AS	10	1/3	1625	1445	18"	25.32"	28.63"	23.32"	13.5"	16.5"	12"
STXD12RHULQH1AS	12	1/2	1625	1918	20"	26.94"	31.32"	24.94"	15.5"	18.5"	14"
STXD14RHULMM1AS	14	1/4	1075	2148	20"	26.94"	31.32"	24.94"	15.5"	18.5"	14"
STXD15RHULQM1AS	15	1/2	1140	2643	24"	27.63"	36.5"	25.63"	19.5"	22.5"	18"
STXD16RHULQM1AS	16	1/2	1140	3187	24"	27.63"	36.5"	25.63"	19.5"	22.5"	18"



Commercial Rooftop Fan Accessories

Roof Mounting Curbs

Item #	O.D. Square	Height	Fits Fan Size
711216	16.5"	12"	6, 7, 8, 10
711218	18.5"	12"	12, 14
711222	22.5"	12"	15, 16



Gravity Backdraft Dampers

Item #	O.D. Square	Height	Fits Fan Size
411012	12"	2"	6, 7, 8, 10
411014	14"	2"	12, 14
411018	18"	2"	15, 16

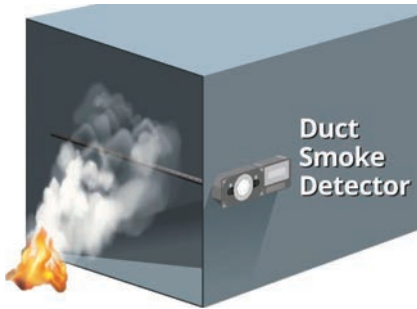


Speed Controller

Item #	Voltage	For Fan Size
2727.1	115v	6 - 14
2828.1	115v	15, 16



The **InnovairFlex D4120** is a 4-wire photoelectric duct smoke detector that features a pivoting housing that fits both square and rectangular footprints, and mounts to round or rectangular ductwork. As many as 50 InnovairFlex detectors can be interconnected. When one unit senses smoke, all interconnected detectors will switch their relays; only the detector sensing smoke will go into alarm, thus pinpointing the fire source.



Item #	Duct Smoke Detector
D4120	4-Wire Photoelectric Low-Flow Duct Smoke Detector
D4120W	NEMA 4 - Watertight Version of the D4120



Item #	Sampling Tubes
DST1	Metal Sampling Tube: Duct Widths up to 1'
DST1.5	Metal Sampling Tube: Duct Widths of 1' - 2'
DST3	Metal Sampling Tube: Duct Widths of 2' - 4'
DST5	Metal Sampling Tube: Duct Widths of 4' - 8'
DST10	Metal Sampling Tube: Duct Widths of 8' - 12'



RTS151

RTS151KEY

MHR

MHW

APA151

RTS2-AOS

The **MHR & MHW** mini-horns have two tone and two volume settings.

The **APA151** annunciator provides an audible alarm, a red LED for alarm status, and green for power status. For applications without a control panel, to comply with NFPA 90A.

The **RTS151 & RTS151KEY** remote test stations are designed to test duct smoke detectors from a convenient location.

The **RTS2-AOS** multi-signaling unit includes a key switch that can be used to select one of two connected sensors to be tested and reset.

Item #	Accessories
RTS151	Remote Test Station
RTS151KEY	Remote Test Station w/ Key Lock
MHR	Mini-Horn Alarm (Red Wall Plate)
MHW	Mini-Horn Alarm (White Wall Plate)
APA151	Remote Annunciator w/ Piezo Alarm
RTS2-AOS	Multi-Signaling Unit w/ Add-On Strobe Light

Smoke Testing



Smoke Candles produce a dense white smoke ideal for testing exhaust fans, checking for leaks in ductwork, and determining air flow patterns.

QwikSmoke® is a universal smoke alarm test gas. Designed for use with all smoke detectors; with and without functional test mode capability; battery operated or hard wired. Fast, reliable and easy to use - takes less than 30 seconds for most detectors.



Item #	Description	Size
ZS301A	#1A Smoke Candle - 4,000 Cubic Feet of Smoke in 30 Seconds	1.5" x 1.5"
QT2330	QwikSmoke™ Universal Smoke Alarm Test Gas	2.9 oz.




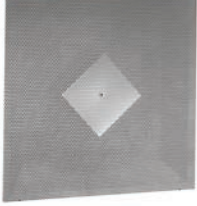
The **Adjustable Style RSS Series** has adjustable set points, and is factory-set to activate on pressure rise. In furnace applications, it proves fan flow by sensing draft down from blower; switch actuation allows the ignition start up, or shuts the system down upon insufficient draft. Electronic air cleaners can employ sensing switches to prove airflow; switch actuation starts unit with sufficient airflow or draft.

Air Pressure Sensing Switch

Item #	Range in Inches of W.C.	Contact Type
RSS495011	0.25" to 1.0" w.c.	SPDT

24" x 24" T-Bar Lay-In Grilles - Steel

Supply Diffusers - With Insulated Back


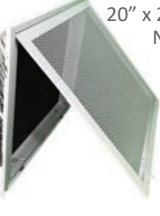
3-Cone, 4-Way		Perforated	
			
Part #	Case Qty.	Part #	Case Qty.
GRD-HVS-R6	2	GRD-RENPS-R6	4



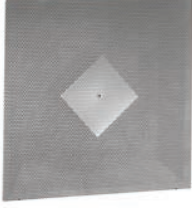
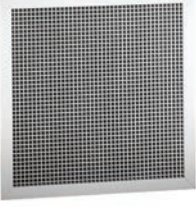
Many other styles are available - Contact your HD Representative for details.

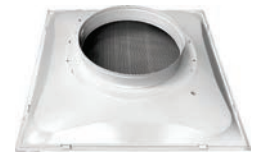


Filtered Returns - With Insulated Back

Stamped with Filter		Perforated with Filter	
			20" x 20" x 1" Nominal Filters
Part #	Case Qty.	Part #	Case Qty.
GRD-659TI-R6	2	GRD-PFTI-R6	2


Return Grilles - With Insulated Back

Perforated		Eggcrate	
			
Part #	Case Qty.	Part #	Case Qty.
GRD-RENPS-R6	4	GRD-RE5TI	4



GRDs with Pre-Built Collars Available on Request

24" x 24" T-Bar Lay-In Grilles - Plastic

Modular Core Supply		Eggcrate Filter Return		Back Panel: 6" - 16"	
					
Part #	Case Qty.	Part #	Case Qty.	Part #	Case Qty.
GRD-RZ-2154	5	GRD-RZ-2164	5	GRD-RZ-2155	5

The **Modular Core Diffuser** has four adjustable cores, allowing for one, two, three, or four-way air patterns.


The **Eggcrate Filtered Return** can be used with or without a 20" x 20" x 1 nominal filter.


The **Adjustable Back Panel** has pre-built 6" hole, with scored rings up to 16" to accommodate multiple collar sizes. It has a friction fit to the back of the diffuser.

Plastic Supply Grilles

Rezzin™ polymer plastic grilles are perfect for applications with high moisture, or where constant cleaning is required.

- Multi-shutter damper
- Bright White finish

	Size	Item #	Case Qty.
4-Way 	6" x 6"	GRD-RZ4-0606	20
	8" x 8"	GRD-RZ4-0808	20
	10" x 10"	GRD-RZ4-1010	20
	12" x 12"	GRD-RZ4-1212	10

	Size	Item #	Case Qty.
3-Way 	8" x 4"	GRD-RZ3-0804	20
	10" x 6"	GRD-RZ3-1006	20
	10" x 8"	GRD-RZ3-1008	20
	12" x 6"	GRD-RZ3-1206	20
	14" x 6"	GRD-RZ3-1406	20
	14" x 8"	GRD-RZ3-1408	20

Vertical Sidewall Supply Grilles

Size	Item #	Case Qty.
8" x 4"	GRD-821-0804	10
10" x 6"	GRD-821-1006	10
10" x 8"	GRD-821-1008	10
10" x 10"	GRD-821-1010	5
12" x 6"	GRD-821-1206	10
12" x 8"	GRD-821-1208	10


Size	Item #	Case Qty.
12" x 12"	GRD-821-1212	5
14" x 6"	GRD-821-1406	10
14" x 8"	GRD-821-1408	10
16" x 6"	GRD-821-1606	10
20" x 6"	GRD-821-2006	5




The **821 Series** is a steel, vertical, straight-blade supply register with multi-louver damper volume control for sidewall installation.

- All-steel construction w/ metal handle
- Vertical, adjustable face bars
- Horizontal multi-shutter valve
- Bright White finish

Ceiling Supply Grilles

Direction	Size	Item #	Case Qty.
3-Way 	8" x 4"	GRD-683M-0804	20
	10" x 6"	GRD-683M-1006	20
	10" x 8"	GRD-683M-1008	20
	12" x 6"	GRD-683M-1206	20
	12" x 8"	GRD-683M-1208	20
	14" x 6"	GRD-683M-1406	20
	14" x 8"	GRD-683M-1408	10

Direction	Size	Item #	Case Qty.
4-Way 	6" x 6"	GRD-684M-0606	20
	8" x 8"	GRD-684M-0808	20
	10" x 10"	GRD-684M-1010	20
	12" x 12"	GRD-684M-1212	10

The **680M Series** is a stamped, straight blade supply register with multi-louver damper for ceiling or sidewall installation.

- All-steel construction with metal handle
- One-piece face w/ damper for control
- Fins spaced on 1/2" centers at 40°

Filter Frame Return Grilles

Size	Item #	Case Qty.
12" x 12"	GRD-673-1212	5
12" x 24"	GRD-673-1224	5
24" x 12"	GRD-673-2412	5
12" x 36"	GRD-673-1236	1
14" x 14"	GRD-673-1414	5
14" x 20"	GRD-673-1420	5
14" x 25"	GRD-673-1425	5
25" x 14"	GRD-673-2514	5
16" x 16"	GRD-673-1616	5
16" x 20"	GRD-673-1620	3
16" x 25"	GRD-673-1625	3
25" x 16"	GRD-673-2516	3
18" x 18"	GRD-673-1818	5
18" x 24"	GRD-673-1824	5
18" x 36"	GRD-673-1836	
20" x 20"	GRD-673-2020	3
20" x 25"	GRD-673-2025	3
25" x 20"	GRD-673-2520	3
20" x 30"	GRD-673-2030	3
30" x 20"	GRD-673-3020	3
24" x 24"	GRD-673-2424	3
24" x 30"	GRD-673-2430	3
25" x 25"	GRD-673-2525	3

The **673 Series** steel return air filter grille:

- 1/2" spaced fins set at 40°
- Uses standard 1" thick filters
- Removable face for install & cleaning
- Adjustable filter retainers
- Bright white finish



20" x 30" VS. 30" x 20"

Return Grilles

Non-Filtered Return Grilles

Size	Item #	Case Qty.
10" x 8"	GRD-672-1008	10
12" x 12"	GRD-672-1212	10
12" x 24"	GRD-672-1224	10
16" x 25"	GRD-672-1625	5
20" x 20"	GRD-672-2020	5
20" x 25"	GRD-672-2025	5
20" x 30"	GRD-672-2030	5



















The **672 Series** steel return air grille has:

- All-steel construction
- 1/2" spaced fins set at 40°
- Exceptional free area
- 5/16" Margin Turnback
- Bright White finish


PVC Pipe & Fittings

Schedule 40 PVC Fittings



Tee SLIP x SLIP x SLIP			Elbow SLIP x SLIP		Elbow SLIP x FIPT		Street Elbow SPIG x SLIP		Street Elbow MIPT x SLIP		45° Elbow SLIP x SLIP		Coupling SLIP x SLIP		Female Adapter SLIP x FIPT	
																
Size	Part #	Qty.	Part #	Qty.	Part #	Qty.	Part #	Qty.	Part #	Qty.	Part #	Qty.	Part #	Qty.	Part #	Qty.
3/4"	PVC-401-007	50	PVC-406-007	50	PVC-407-007	50	PVC-409-007	50	PVC-410-007	50	PVC-417-007	50	PVC-429-007	50	PVC-435-007	50
1"	PVC-401-010	50	PVC-406-010	50	-	-	PVC-409-010	50	PVC-410-010	50	PVC-417-010	50	PVC-429-010	50	PVC-435-010	50

Male Adapter MIPT x SLIP			Cap - SLIP		CAP - FIPT		Plug - MIPT		Threaded Union SLIP x SLIP		Running Trap		P-Trap		1/2" Teflon Tape	
																
Size	Part #	Qty.	Part #	Qty.	Part #	Qty.	Part #	Qty.	Part #	Qty.	Part #	Qty.	Part #	Qty.	Part #	Qty.
3/4"	PVC-436-007	50	PVC-447-007	100	PVC-448-007	50	PVC-450-007	50	PVC-457-007	10	PVC-488-007	100	PVC-489-007	100		
1"	PVC-436-010	50	PVC-447-010	50	-	-	-	-	PVC-457-010	10	-	-	PVC-489-010	50	6-733	

PVC Pipe

PVC Pipe - 10' Lengths		
		
Size	Part #	Qty.
3/4"	PVC-PIPE-007	10
1"	PVC-PIPE-010	10

Reducers: 1" to 3/4"

Reducing Adapter 1" MIPT x 3/4" SLIP		Reducing Bushing 1" SPIG x 3/4" SLIP	
			
Part #	Qty.	Part #	Qty.
PVC-436-131	50	PVC-437-131	50

PVC Glossary

Type	Description
SLIP	A female fitting that slides over the pipe size
SPIG	Spigot - a "street" fitting that is the exact pipe size (fits inside a SLIP)
MIPT	Male Iron Pipe Thread
FIPT	Female Iron Pipe Thread

Ball Valves

Item #	Description
P4FBV-3/4	3/4" SLIP x SLIP Ball Valve
JV1	3/4" SLIP x SLIP Jones Valve with 1/4" Male Flare Blowout Connection



P4FBV-3/4



JV1

The **JV1 Jones Valve** is a simple condensate drain line blow out valve. Easily clear clogged drain lines by closing the valve, and blowing nitrogen through the 1/4" male flare with Schrader valve.

PVC Glues & Primers by



Item #	Name	Features / Application	Size	Case Qty.
55902	"Gene" Regular Body PVC Glue	Fast Drying - Clear Color Up to 2" Pressure Schedule 40	8 oz.	24
55988	"Hot" Quick Set Medium Body PVC Glue	Fastest Drying - Blue Color Up to 6" Schedule 40 Up to 1-1/4" Schedule 80	4 oz.	24
55989			8 oz.	24
55990			16 oz.	12
55952	"Gold" Heavy Body PVC Glue	Clear Color - Excellent Gap Fill Industrial Bonding Strength Up to 12" Schedule 40/80	16 oz.	12
55912	"Jim" Purple Primer	Hi-Etch Primer Prepares Surface for Superior Bonding Strength	8 oz.	24



55902

55988
55989
55990

55952

55912

Overflow Switches

SAFE-T-SWITCH



In-Line: SS1



Auxiliary Port on Primary Drain: SS2



Secondary Pan Mount: SS3



Commercial Package Units: SS500EP



Ductless Units: SS610E



Item #	Mfg. #	Type / Features	Case Qty.
97085	SS1	In-Line Float Switch (Magnetic Reed) Includes Cleanout Tool	24
97087	SS2	Installs on the Auxiliary Outlet of the Primary Drain Pan with Included 3/4" Adapter	24
97089	SS3	Thumbscrew Bracket Mount Float Switch for Secondary Drain Pans	24
97693	SS500EP	Plenum-Rated Primary Pan Sensor for Commercial Package Units	24
97622	SS610E	Ductless Condensate Switch Clips to Pan or Coil	12



AG-1100+



AG-3150E



AG-3180E



Item #	Mfg. #	Type / Features	Case Qty.
96100	AG-1100+	Magnetic Float Switch System for Metal Secondary Drain Pans	30
96124	AG-3150E	For Auxiliary Port on Primary Pan w/ Bonus Secondary Sensor	10
96128	AG-3180E	Plenum-Rated Micro Pan Sensor for Commercial Package Units	10



CS-1



BG-301



BG-101



Item #	Type / Features	Case Qty.
CS-1	In-Line Float Switch (Magnetic Reed)	10
BG-301+	Latching Float Switch w/ Clear Status Window & Manual Reset for Auxiliary Port on Primary Pans	30
BG-101	Latching Float Switch w/ Manual Reset for Secondary Pans	20



The **Combat P-Trap** is an all-in-one solution: p-trap, isolation ball valve, cleanout tool, and chemical dispenser in one device.

- To clear blockage, simply remove cap and basket. Use preferred type of device (Vacuum, CO2 gun, nitrogen).
- Close ball valve for cleaning. No need for cutting drain line.
- Fits all chlorine tabs on the market
- Easily insulated with standard insulation

“Combat” P-Trap

Item #	Description	Case Qty.
CPT-100	Combat P-Trap	10

Condensate Pumps

Style	Item #	Voltage	H x W x D	Lift	Flow @ 1' Head	Tank Size	Tubing Included?
Traditional	BK221TUL	120v	6.6" x 11.2" x 5.2"	22'	125 GPH	2.5 Quarts	3/8" Tubing - 20ft.
	BK222TUL	230v					
Low Profile	CL201UL	120v	4.9" x 10.6" x 5"	20'	145 GPH	.85 Quarts	No
	CL202UL	230v					
Submersible	IPC13AT	120v	4" x 8" x 3.1"	12'	81 GPH	Optional Tank 3.5" x 10.1" x 3.5"	3/8" Tubing - 20ft.




Replacement Check Valves

Item #	Description	Item #	Description
CP-CV	3/8" Barb x 3/4" Threaded Check Valve 	CRP1722	Twist-lock Check Valve for Beckett 



Ductless Condensate Pumps

Brand	Item #	Name	Voltage	Type	L x W x H	BTU Range	Max Head	Capacity	Sound
BLUEDIAMOND	X86-003	MICROBLUE®	110 - 230v	Concealed	5.8" x 1.5" x 1.6"	Up to 18,000	16 ft.	1.3 gal./hour	17 dB(A)
	X87-721	MAXIBLUE®	208 - 230v	Remote Mount	6.2" x 2.3" x 2.6"	18,000 - 48,000	23 ft.	3.7 gal./hour	21 dB(A)
	83809	Mini Aqua	110 - 250v	Concealed	6.5" x 1.2" x 1.2"	Up to 49,500	33 ft.	1.6 gal./hour	21 dB(A)
	83909	Mini Orange	110 - 250v	Remote Mount	4.3" x 1.5" x 2"	Up to 54,600	33 ft.	1.6 gal./hour	21 dB(A)
	83930	Mini White Silent+	110 - 250v	Surface Undermount	11.5" x 1.9" x 1.3"	Up to 54,000	33 ft.	6 gal./hour	19 dB(A)



Ductless Filters & Traps

Item #	Description
83893	5/8" Pre-filter for Ductless Pumps - Protects Pump from Condensate Debris
83180	EZT-180 5/8" Waterless In-Line Trap - Permits Flow While Blocking Odors & Insects



Condensate Accessories

Hose Clamps

Item #	Size	Qty.
HC6202	1/4" to 5/8"	6pk.
HC6203	5/16" to 7/8"	
HC5410	9/16" to 1-1/8"	
HC5420	13/16" to 1-3/4"	



Vinyl Tubing

Item #	Size
7-14	1/4" x 100'
7-38	3/8" x 100'
7-58	5/8" x 100'



Nylon Barb Fittings

Item #	Size	Qty.
701-043	3/8" Barb x 3/4" MIPT (Tubing to PVC)	2pk.
701-030	1/4" x 1/4"	
701-032	3/8" x 3/8"	
701-033	5/8" x 5/8"	
701-038	3/8" Tee	
701-039	5/8" Tee	
701-046	3/8" Elbow	
701-040	5/8" Elbow	



Flexible Adapters

Item #	Size
83977	5/8" Hose to 3/4" PVC
C01-231	Flexible Step Adapter (8,13,19,25,32,38 mm)



Ductless "RoughinBox"



The **RoughinBox** is for studs at 16" centers. It protects the lineset from damage and shields the drain outlet from dirt and debris. It has top and bottom lineset ports, and has vertical or horizontal condensate discharge for highwall or height restricted applications.

Item #	Description	W x H x D
RBX-3-MD-NC	Between-The-Studs Ductless Piping Box	14" x 10" x 3.5"

Black Iron Pipe & Fittings

1/2" Black Iron Couplings

Union		Coupling FIP x FIP		45° Elbow: FIP x FIP		90° Elbow: FIP x FIP		90° Street Elbow: MIP x FIP		Tee FIP x FIP x FIP		Cap		Plug	
Part #	Qty.	Part #	Qty.	Part #	Qty.	Part #	Qty.	Part #	Qty.	Part #	Qty.	Part #	Qty.	Part #	Qty.
BP-UNION	50	BP-COUPLING	60	BP-ELBOW-45	50	BP-ELBOW-90	50	BP-ELBOW-90MF	60	BP-TEE	40	BP-CAP	75	BP-PLUG	50

3/4" to 1/2" Reducers

Reducer Coupling 3/4" FIP x 1/2" FIP		Reducer Bushing 3/4" IP x 1/2" FIP	
Part #	Qty.	Part #	Qty.
BP-REDUCER	60	BP-REDUCER-MF	75

Pipe Glossary

MIPT	Male Iron Pipe Thread
FIPT	Female Iron Pipe Thread

1/2" Nipples

Item #	Size	Case Qty.
BP-NIPPLE-00	1/2" Close Nipple	25
BP-NIPPLE-02	1/2" x 2"	25
BP-NIPPLE-03	1/2" x 3"	25
BP-NIPPLE-04	1/2" x 4"	25
BP-NIPPLE-05	1/2" x 5"	25
BP-NIPPLE-06	1/2" x 6"	25
BP-NIPPLE-08	1/2" x 8"	25
BP-NIPPLE-10	1/2" x 10"	25
BP-NIPPLE-12	1/2" x 12"	25

1/2" Pipe

Item #	Size	Case Qty.
BP-PIPE-18	1/2" x 18"	5
BP-PIPE-24	1/2" x 24"	5
BP-PIPE-36	1/2" x 36"	5
BP-PIPE-48	1/2" x 48"	5
BP-PIPE-60	1/2" x 60"	5

Gas Line & Valves



Item #	Description	Case Qty.
SGV441	1/2" FIP x 1/2" FIP Brass Shutoff Valve	10
YELLOW GAS LINE 36IN	Flexible Yellow Gas Line 1/2" MIP x 1/2" MIP x 36"	25
YELLOW GAS LINE 48IN	Flexible Yellow Gas Line 1/2" MIP x 1/2" MIP x 48"	12

Pipe Sealants



Brand	Item #	Description	Case Qty.
RECTORSEAL	25551	Soft-set, slow drying pipe dope - seals, lubricates, and protects threaded pipe and fittings. Can be pressurized immediately.	24pk.
Oatey	31403D	Yellow Gas Line PTFE Thread Seal Tape	20pk.

Copper Tubing

Soft Copper Rolls

O.D	50' Roll Item #	100' Roll Item #
1/4"	COP-025-50FT	-
5/16"	COP-031-50FT	-
3/8"	COP-037-50FT	COP-037-100FT
1/2"	COP-050-50FT	COP-050-100FT
5/8"	COP-062-50FT	COP-062-100FT
3/4"	COP-075-50FT	COP-075-100FT
7/8"	COP-087-50FT	COP-087-100FT
1-1/8"	COP-112-50FT	-



Hard-Drawn ACR Copper

O.D	20' Item #
3/8"	COP-ACR-037-20FT
1/2"	COP-ACR-050-20FT
5/8"	COP-ACR-062-20FT
3/4"	COP-ACR-075-20FT
7/8"	COP-ACR-087-20FT
1-1/8"	COP-ACR-112-20FT
1-3/8"	COP-ACR-137-20FT
1-5/8"	COP-ACR-162-20FT
2-1/8"	COP-ACR-212-20FT

Pre-Insulated Copper Tubing from **-EBRILLC-**



Available in 25', 50', and 164' Lengths

O.D	Insulation Thickness	25' Roll Item #	50' Roll Item #	164' Roll Item #	Insulation R-Value
1/4"	1/2"	COP-INS-025-025F	COP-INS-025-050F	COP-INS-025-164F	4.5
3/8"		COP-INS-037-025F	COP-INS-037-050F	COP-INS-037-164F	4.0
1/2"		COP-INS-050-025F	COP-INS-050-050F	COP-INS-050-164F	
5/8"		COP-INS-062-025F	COP-INS-062-050F	COP-INS-062-164F	
3/4"		-	COP-INS-075-050F	-	
7/8"		-	COP-INS-087-050F	-	

- Pre-insulated ASTM B280 copper tube
- Extruded closed-cell polyethylene foam
- Vapor Permeability $\mu \geq 11.000$ for the best anti-condensation performance
- 100% UV resistant aluminum outer jacket protects from direct sunlight
- Sealed at a pressure of over 70 for the perfect inner cleanliness of the tubes

Why use a 164' roll?

- Avoid braze joints on longer line runs
- Create multiple linesets on VRF and multi-zone jobs.
- Avoid excess scrap by unrolling and cutting your exact needed size for each line.



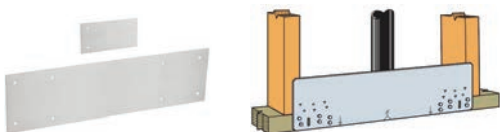
PRO-Fit™ Fittings

PRO-Fit™ Quick Connect flame-free fittings for connecting refrigerant lines. Make clean, leak-free connections in seconds, without the use of a brazing torch or press tool and jaw. Rated for up to 870 psi (60 bar). No need to nitrogen purge; no fire hazards!

Straight Union		90° Elbow Union		Straight Reducer		90° Elbow Reducer		Stub Tube x Flare Socket		Quick Connect Service Valve		Line Marking Tool & Disconnect Clips	
Part #	Size	Part #	Size	Part #	Size	Part #	Size	Part #	Size	Part #	Size	Part #	Qty.
87018	1/4"	87024	1/4"	87030	3/8" x 1/4"	87033	3/8" x 1/4"	87036	1/4"	87042	1/4"	87048	1/4" - 5/8" Kit
87019	3/8"	87025	3/8"	87031	1/2" x 3/8"	87034	1/2" x 3/8"	87037	3/8"	87043	3/8"		
87020	1/2"	87026	1/2"	87032	5/8" x 1/2"	87035	5/8" x 1/2"	87038	1/2"	87044	1/2"	87049	3/4" - 7/8" Kit
87021	5/8"	87027	5/8"					87039	5/8"	87045	5/8"		
87022	3/4"	87028	3/4"										
87023	7/8"	87029	7/8"										



Nail Plates



Nail Plates help prevent nails and screws from piercing pipes and electrical lines. They are typically placed over utilities that pass through framing members.

Item #	Size	Gauge	# of Holes	Case Qty.
NAIL-PLATE-3X6	3" x 6"	12ga.	12	25
NAIL-PLATE-6X18	6" x 18"	16ga.	16	25

Copper Fittings

Copper Fitting Glossary

Type	Description
C	Coupling - Female fitting that slides over the pipe size
FTG	"Street" Fitting is the exact pipe size - fits inside a coupling

Rolled Stop Coupling C x C

Item #	Size	Pack Qty.
W01003	1/4"	100
W010142	5/16"	100
W01009	3/8"	100
W01017	1/2"	100
W01022	5/8"	100
W01028	3/4"	50
W01034	7/8"	50
W01047	1-1/8"	25
W01055	1-3/8"	10
W01063	1-5/8"	10
W01072	2-1/8"	6

No-Stop Coupling C x C

Item #	Size	Pack Qty.
W01900	1/4"	100
W01901	3/8"	50
W01902	1/2"	50
W01903	5/8"	100
W01904	3/4"	25
W01905	7/8"	50
W01906	1-1/8"	25
W01907	1-3/8"	25
W01908	1-5/8"	10
W01909	2-1/8"	6

Reducing Couplings C x C

Item #	Size	Pack Qty.
W01011	3/8" x 1/4"	100
W01019	1/2" x 3/8"	100
W01023	5/8" x 1/2"	100
W01025	5/8" x 3/8"	100
W01029	3/4" x 5/8"	50
W01030	3/4" x 1/2"	50
W01035	7/8" x 3/4"	50
W01036	7/8" x 5/8"	50
W01049	1-1/8" x 7/8"	25
W01050	1-1/8" x 3/4"	25
W01056	1-3/8" x 1-1/8"	25
W01058	1-3/8" x 7/8"	25
W01064	1-5/8" x 1-3/8"	10
W01065	1-5/8" x 1-1/8"	10
W01073	2-1/8" x 1-5/8"	15

Reducing Fittings FTG x C

Item #	Size	Pack Qty.
W01306	3/8" x 1/4"	100
W01312	1/2" x 3/8"	100
W01315	5/8" x 1/2"	100
W01317	5/8" x 3/8"	100
W01320	3/4" x 5/8"	50
W01321	3/4" x 1/2"	50
W01325	7/8" x 3/4"	50
W01326	7/8" x 5/8"	50
W01337	1-1/8" x 7/8"	25
W01338	1-1/8" x 3/4"	25
W01343	1-3/8" x 1-1/8"	25
W01345	1-3/8" x 7/8"	10
W01350	1-5/8" x 1-3/8"	10
W01351	1-5/8" x 1-1/8"	10
W01358	2-1/8" x 1-5/8"	15



90° Long Radius Elbow: C x C

Item #	Size	Pack Qty.
W02715	1/4"	100
W02710	5/16"	100
W02716	3/8"	100
W02717	1/2"	100
W02722	5/8"	50
W02728	3/4"	50
W02734	7/8"	25
W02747	1-1/8"	10
W02055	1-3/8"	10
W02063	1-5/8"	5
W02072	2-1/8"	1



90° Long Radius Street Elbow: C x C

Item #	Size	Pack Qty.
W02809	3/8"	100
W02817	1/2"	100
W02822	5/8"	50
W02828	3/4"	50
W02834	7/8"	25
W02847	1-1/8"	10
W02350	1-3/8"	10
W02355	1-5/8"	5
W02359	2-1/8"	1



45° Elbow C x C

Item #	Size	Pack Qty.
W03012	3/8"	100
W03021	1/2"	100
W03026	5/8"	50
W03030	3/4"	50
W03034	7/8"	25
W03044	1-1/8"	20
W03050	1-3/8"	10
W03055	1-5/8"	5
W03059	2-1/8"	1



Tees C x C x C

Item #	Size	Pack Qty.
W40306	1/4"	100
W04000	3/8"	100
W04001	1/2"	100
W04006	5/8"	50
W04017	3/4"	50
W04031	7/8"	25
W04048	1-1/8"	10
W04068	1-3/8"	10
W04084	1-5/8"	5
W40102	2-1/8"	1



Caps: C

Item #	Size	Pack Qty.
W07004	3/8"	100
W07006	1/2"	100
W07007	5/8"	100
W07008	3/4"	50
W07009	7/8"	50
W07011	1-1/8"	25
W07012	1-3/8"	5
W07013	1-5/8"	5
W07014	2-1/8"	5



FlareTite Gaskets

are used to prevent leaks on 45° flares. The locking tabs hold in place, and the coating prevents leaks up to 10,000psi.

Item #	Size	Pack Qty.
97216	(2) 1/4" x (2) 3/8"	4pk.
97215	(2) 1/4" x (2) 1/2"	
97214	(2) 1/4" x (2) 5/8"	
97212	(2) 3/8" x (2) 5/8"	2pk.
97211	(2) 3/8" x (2) 3/4"	
97210	Combo Kit: 9ea. of 1/4" - 5/8"	



Flare Fittings & Gaskets

Swivel Flare to Solder Adapter

Item #	Size	Pack Qty.
F2003	1/4"	4pk.
F2004	3/8"	
F2005	1/2"	
F2006	5/8"	2pk.
F2007	3/4"	



Flare Nuts

Item #	Size	Pack Qty.
DNS4-4	1/4"	10pk.
DNS4-6	3/8"	
DNS4-8	1/2"	
DNS4-10	5/8"	
DNS4-12	3/4"	

Brazing Alloys & Flux

Standard Brazing Rods

Brand	Item #	Name	AG %	Application	Details	Size
	95000	Fos-Flo®	0%	Copper-to-Copper, Brass, and Bronze.	Economical, very fluid medium temp. filler metal. Withstands moderate vibration.	20" Rods - 28 pk.
	95060	Sil-Fos® 5	5%	For copper-to-copper the phosphorus in the Sil-Fos serves as the fluxing agent.	Ability to fill gaps and form fillets without affecting joint strength. Slow Flow.	20" Rods - 28 pk.
LucasMilhaupt	95150	Sil-Fos® 15	15%	For brass applications, separate flux is recommended.	Highest joint ductility to withstand stresses in refrigeration applications. Slow Flow.	20" Rods - 28 pk.
	98100	Silvaloy® 452 Flux Coated (Blue)	45%	Flux-Coated Rod for Joining Dissimilar Metals	Joins ferrous, non-ferrous and dissimilar metals with large joint clearances.	18" Rods - 8 pk.
	98120	Silvaloy® 560 Flux Coated (Orange)	56%		Lowest temperature filler. Very fluid alloy joins ferrous and non-ferrous metals.	18" Rods - 8 pk.



Copper-to-Aluminum Brazing Rods

Brand	Item #	Name	AL %	Application	Details	Size
LucasMilhaupt	99088	Handy One®	22%	Aluminum-to-Copper & Aluminum-to-Aluminum	Flux-Cored Low-Temperature Brazing Rod - Melt @ 800°, Flow @ 900°	20" Rods - 4 pk.
SOLDERWELD	SW-ALCU5.5	Al-Cop Braze™	22%	Aluminum-to-Copper Brazing	Low Melting Point and Narrow Melt Range - Recommended Brazing @ 950-1000°F	8" Rods - 5 pk.
SOLDERWELD	SW-AS09305.5	Alloy Sol™	95%	Aluminum Repair and Joining Rod	For Aluminum Fittings, Tubing, and Coils - Recommended Brazing @ 600-700°F	8" Rods - 5 pk.



Low Temp Dissimilar Metal Solder

Brand	Item #	Name	Application	Details	Size
SOLDERWELD	SW-MS09305K	Multi Sol™	Aluminum, Steel, Pot Metal, Copper, Brass, and Galvanized Steel	Tin-Zinc-Cadmium Multipurpose Solder - Recommended Brazing @ 250-500°F	18" Rods - 5 pk.



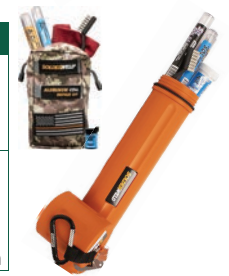
Flux

Brand	Item	Description	Size
LucasMilhaupt	97030	Handy® Flux Liquid All Purpose Flux	7 oz. Jar
	SW-ASF1	Alloy Sol™ Flux Powdered Flux for Brazing Aluminum	1 oz. Jar
SOLDERWELD	SW-MSF2	Multi Sol Liquid Flux™ for Aluminum to Aluminum, Copper, and Most Dissimilar Metals	.7 oz. Bottle



SolderWeld® Kits

Item	Type	Contents
SW-ACRTC	Aluminum Repair Tech Bag	(5) 8" Alloy Sol Rods (5) 8" Alloy Cop Rod Alloy Sol Flux Wire Brush - Red Rag
SW-HVAK15	All-in-One Brazing Pack	(.5lbs.) 15% Sil Phos Rods (2) 56% Sil Sol Rods (5) 8" Alloy Cop Rods (5) 8" Alloy Sol Rods Alloy Sol Flux - Wire Brush



Brazing Gases

Type	Tank Size	Contents	Item #	Tank Item #
Acetylene	10 cu. ft.	GAS-MC	GAS-MC-TANK	
	40 cu. ft.	GAS-B	GAS-B-TANK	
Oxygen	20 cu. ft.	GAS-R20	GAS-R20-TANK	
MAP Pro	14 oz.	525-MT1	-	
Nitrogen	40 cu. ft.	GAS-N40	GAS-N40-TANK	
	225 cu. ft.	GAS-N225	GAS-N225-TANK	

Acetylene fuel can be used in oxy/acetylene brazing, or with air/acetylene torches

Oxygen provides a higher flame temperature than air/acetylene

Map Pro gas allows for the attachment of a portable torch handle that is much easier to handle than traditional brazing rigs

Nitrogen is used for purging/flushing lines, as well as avoiding copper oxide while brazing



Brazing Accessories

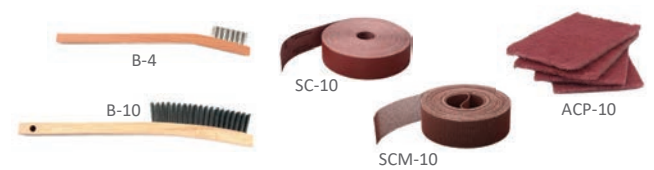
Flame Protection

Brand	Item	Description	Size
Nu-Calgon	4371-36	Thermo-Trap Protective Barrier Paste	11 oz.
	4371-32	Thermo-Trap Protective Barrier Gel	1 qt.
SOLDERWELD	SW-HB1	Hot Block - Reusable Heat Absorption Putty	1 lb. Tub
	SW-MFRB	Flame-Resistant Magnetic Blanket	18" x 18"



Surface Preparation

Item	Description	Size
B-4	Welder's Brush w/ Stainless Steel Bristles	9"
B-10	Large Welder's Scratch Brush	14"
SC-10	Sandcloth - 120 Grit	1.5" x 30'
SCM-10	Open Mesh Sandcloth	1.5" x 30'
ACP-10	Abrasive Nylon Cleaning Pad: 10pk.	6.5" x 4.25"



ZoomLock® Max Flame-Free Refrigerant Fittings

ZoomLock® MAX fittings, designed for the air conditioning and refrigeration markets, allow contractors to make secure leak-free connections in seconds. It means less time on the job and more money in the contractor's pocket. By eliminating concerns about gas and flames, ZoomLock MAX fittings offer more flexibility in where and when you can work, plus there's no need to nitrogen-purge the lines.

- Leak-proof connections for refrigerant lines up to 700 psi
- Hermetically sealed packaging for debris-free fittings
- Hard, robust copper fittings made from refrigerant grade copper
- Proven three-point press technology providing a leak-free and secure joint
- No more crimp gauge needed - connect the fitting with one complete cycle
- Jaws available for most professional crimping tool brands, both large and compact

Reducers



Size	Item #	Size	Item #
3/8 x 1/4	870800	7/8 x 1/2	870812
1/2 x 1/4	870808	7/8 x 5/8	870804
1/2 x 3/8	870801	7/8 x 3/4	870805
5/8 x 1/4	870809	1-1/8 x 5/8	870814
5/8 x 3/8	870810	1-1/8 x 3/4	870806
5/8 x 1/2	870802	1-1/8 x 7/8	870807
3/4 x 1/2	870811	1-3/8 x 7/8	870815
3/4 x 5/8	870803	1-3/8 x 1-1/8	870816

Couplings



Size	Item #
1/4"	870508
3/8"	870509
1/2"	870503
5/8"	870510
3/4"	870505
7/8"	870506
1-1/8"	870507
1-3/8"	870511

45° Elbows



Size	Item #
1/4"	871401
3/8"	871402
1/2"	871403
5/8"	871404
3/4"	871405
7/8"	871406
1-1/8"	871407
1-3/8"	871399

90° Street Elbows



Size	Item #
3/8"	871302
1/2"	871303
5/8"	871304
3/4"	871305
7/8"	871306
1-1/8"	871307
1-3/8"	871308

90° Elbows



Size	Style	Item #
1/4"	Standard	870600
3/8"	Standard	870602
1/2"	Long Radius	871613
5/8"	Long Radius	871614
3/4"	Long Radius	871610
7/8"	Long Radius	871611
1-1/8"	Long Radius	871612
1-3/8"	Long Radius	871615

Installation Kit

Item #	Contents
870516	depth gauge for sizes 1/4" to 1-1/8", permanent marker, and cleaning pad.



SAE Flares



Size	Item #
1/4"	871000
3/8"	871002
1/2"	871003
5/8"	871004
3/4"	871005

Caps



Size	Item #
1/4"	870900
3/8"	870902
1/2"	870903
5/8"	870904
3/4"	870905
7/8"	870906
1-1/8"	870907
1-3/8"	870908

Tees



Size	Item #
1/4"	870701
3/8"	870702
1/2"	870703
5/8"	870704
3/4"	870705
7/8"	870706
1-1/8"	870707
1-3/8"	870708

Rothenberger Press Tools

Item	Name	Force
871441	ROMAX® 4000	32kN
871439	Twin Turbo	24kN
871443	ROMAX® Compact	19kN



871439
871443

871441

ZoomLock recommends the use of Rothenberger press tools in combination with ZoomLock MAX jaws. However other press tools may be used with ZoomLock MAX Rothenberger jaws. Check online for tool compatibility.

Rothenberger Jaw Sets

Item	Name	Pieces
871408	MZK-32kN Jaw Kit	
871409	MZK-24kN Jaw Kit	(7): 1/4" to 1-1/8"
871410	MZK-19kN Jaw Kit	
871436	1-3/8" Jaw: Only for 32kN Press Tools	



871436



871408

Refrigerant Locking Caps

Item #	Description	Pack Qty.
CD2290	Nickel Plated, Corrosion Resistant Locking Caps	50
CD3830	Multi-Bit Tool for All Industry Standard Locking Caps	

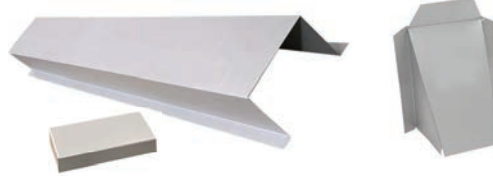


Refrigerant locking caps fit over refrigerant access valves. They help prevent refrigerant theft, and other unauthorized access or tampering. The CD Valve cap opens with a standard valve core tool.



Metal Lineset Covers

Item #	Description	Dimensions
LINECOVER-4X5X10	Lineset Cover With Separate Flat Cap	5" x 4" x 5" x 10'
LINECOVER-CAP	Angled Cap	5.25" x 4.75" x 7"



Angled Lineset Caps also serve as a great wall-mount lineset penetration cover

Lineset Penetration Flashing

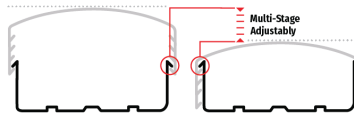
The **Outlet Seal** blocks air leakage, moisture, and rodent intrusion. The hinged style makes it perfect for retrofit or new construction.

Item #	Dimensions	Case Qty.
84006	12" x 12"	4



Lineset Covers from COVER GUARD™ CG

- Available in white, gray, or brown - are also paintable
- 4-stage adjustability accommodates multiple zone line sets and allows the duct to expand from 2" to 4".
- Components are paintable, UV stabilized, and tested to temperatures from -4° degrees F to 140° F.
- Fittings can be opened and closed as needed, so the system can be adjusted as necessary at any time.



Prepackaged 12' Duct Kit - White Color

Item #	Contents		
CGKIT	(3) CGDUC - 4' Duct lengths (2) CGCUP - Couplings	(1) CGINLT - Wall Inlet (1) CGEND - End Cap	(1) CG90 - 90° Flat Elbow Cam Screws & Clips



Individual Components—White Color

78" Ducting		48" Ducting		Duct Coupler		Wall Inlet		End Fitting		90° Flat Elbow		90° Sweep Elbow		45° Flat Elbow		Flat Tee	
Part #	Qty.	Part #	Qty.	Part #	Qty.	Part #	Qty.	Part #	Qty.	Part #	Qty.	Part #	Qty.	Part #	Qty.	Part #	Qty.
CGDUC78	6	CGDUC	12	CGCUP	6	CGINLT	6	CGEND	6	CG90	6	CG90SWP	6	CG45	6	CGTEE	6

Large Flexible Elbow		Small Flexible Elbow		Flexible Adapter		Wall Flange for Flex		90° Inside Elbow		90° Outside Elbow		Soffit Inlet		Cam Screws		Duct Clips	
Part #	Qty.	Part #	Qty.	Part #	Qty.	Part #	Qty.	Part #	Qty.	Part #	Qty.	Part #	Qty.	Part #	Qty.	Part #	Qty.
CGFLXLR	6	CGFLXSM	6	CGFLXA	6	CGWFL	6	CGINT90	6	CGEXT90	6	CGSTI	6	CGSCRW	50	CGCLP	25

Piping Insulation

1/2" Wall Thickness - 6' Sticks

Item #	Mfg. #	Tube O.D.	Wall Size	Case Qty.
INS-025-050	APT01412	1/4"	1/2"	95
INS-037-050	APT03812	3/8"		75
INS-050-050	APT01212	1/2"		99
INS-062-050	APT05812	5/8"		50
INS-075-050	APT03412	3/4"		40
INS-087-050	APT07812	7/8"		35
INS-112-050	APT11812	1-1/8"		25
INS-137-050	APT13812	1-3/8"		20



3/4" Wall Thickness - 6' Sticks

Item #	Mfg. #	Tube O.D.	Wall Size	Case Qty.
INS-062-075	APT05834	5/8"	3/4"	24
INS-075-075	APT03434	3/4"		23
INS-087-075	APT07834	7/8"		20
INS-112-075	APT13834	1-1/8"		15

1" Wall Thickness - 6' Sticks

Item #	Mfg. #	Tube O.D.	Wall Size	Case Qty.
INS-062-100	APT05810	5/8"	1"	20
INS-075-100	APT03410	3/4"		15
INS-087-100	APT07810	7/8"		15
INS-112-100	APT11810	1-1/8"		12
INS-137-100	APT13810	1-3/8"		10
INS-162-100	APT15810	1-5/8"		8
INS-212-100	APT21810	2-1/8"		6



- GREENGUARD Gold Certified
- Microban® antimicrobial protection
- ASTM E 84 25/50 rated up to 2" wall
- Closed-cell foam structure prevents moisture wicking and eliminates need for additional vapor retarder



AP ArmaFlex® Sheets

Item #	Mfg. #	Thickness	Sheet Size	Case Qty.
INS-SHEET-3X4X3/4	APS34043	3/4"	3' x 4'	8
INS-SHEET-3X4X1	APS10043	1"		6

UV Rated Insulation

ArmaFlex® Shield flexible foam insulation is a moisture and UV-resistant product with a durable protective jacket specially designed for line set, HVAC and refrigeration applications. Durable outer jacket resists damage due to sunlight, line trimmers, and other hazards.



6' Sticks					Bulk Boxes				
Wall Size	Tube O.D.	Item #	Mfg. #	Case Qty.	Wall Size	Tube O.D.	Item #	Mfg. #	Box Qty.
3/4"	5/8"	INS-SHD-062-075-06	IPPCT05834	24	3/4"	5/8"	INS-SHD-062-075-60	IPPCT05834CL	60'
	3/4"	INS-SHD-075-075-06	IPPCT03434	24		3/4"	INS-SHD-075-075-40	IPPCT03434CL	40'
	7/8"	INS-SHD-087-075-06	IPPCT07834	24		7/8"	INS-SHD-087-075-40	IPPCT07834CL	40'
	1-1/8"	INS-SHD-112-075-06	IPPCT11834	15		1-1/8"	INS-SHD-112-075-35	IPPCT11834CL	35'
1"	5/8"	INS-SHD-062-100-06	IPPCT05810	20	1"	5/8"	INS-SHD-062-100-35	IPPCT05810CL	35'
	3/4"	INS-SHD-075-100-06	IPPCT03410	15		3/4"	INS-SHD-075-100-30	IPPCT03410CL	30'
	7/8"	INS-SHD-087-100-06	IPPCT07810	15		7/8"	INS-SHD-087-100-25	IPPCT07810CL	25'
	1-1/8"	INS-SHD-112-100-06	IPPCT11810	12					



TPO Line Set Wrap

TPO Rolled Mastic Sealant provides UV protection and a white impact resistant surface for lineset protection.

Item #	Thickness	Roll Width	Roll Length
326381	22 mil Composite	9"	75'

Piping Insulation Tapes & Adhesives



Item #	Description	Size	Qty.
INS-GLUE-08	ArmaFlex® 520 Adhesive w/ Brush Top	1/2pt.	24
VP410	UV Resistant Line Set Tape - Black	2" x 100'	24

Electrical Conduit & Connectors

Flexible Conduit

Item #	Conduit Size
750-12100	1/2" x 100'
750-34100	3/4" x 100'
750-10100	1" x 100'



Premade Liquid-Tite Conduit Whips

Item #	Conduit Size	Wire Size	# of Wires	Application	Pallet Qty.
B6-12-6NM	1/2" x 6'	10ga.	3-Wire (Single-Phase)	1.5 - 3.5 Ton Condensers	60
B6-34-6NM	3/4" x 6'	8ga.		4 - 5 Ton Condensers	45

Liquid-Tite Non-Metallic Connectors

Item #	Type	Size	Box Qty.
750-NMLT50	Straight Connector	1/2"	
750-NMLT75		3/4"	
750-NMLT100		1"	
750-NMLT9050	90° Connector	1/2"	
750-NMLT9075		3/4"	
750-NMLT90100		1"	



One-Hole Conduit Clamps

Item #	Conduit Size	Pack Qty.
PI306	1/2"	20
PI307	3/4"	12
PI908	1"	10



Romex Connectors

Item #	Conduit Size	Pack Qty.
PI321	3/8"	8
PI320	3/8"	25
PI319	3/4"	4



Reducing Washers for Conduit Knockout Holes

Item #	Reduction	Pack Qty.
PI310	3/4" to 1/2"	28
PI304	1" to 1/2"	10
PI305	1" to 3/4"	10



Junction Boxes and Conduit Bodies

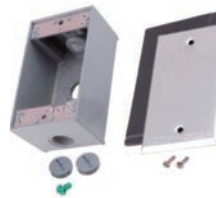
Steel Utility Boxes

Item #	L x W x D	Knockouts
PI361	4" x 2-1/8" x 2-1/8"	1/2"
PI363	4" x 4" x 2-1/8"	1/2" & 3/4"



Weatherproof Utility Boxes

Item #	L x W x D	Hole Size
PI385	4" x 2-3/4" x 2"	1/2"
PI385-34		3/4"
PI382	Weatherproof Blank Cover	



Utility Box Covers

Item #	W x L	Type
PI365	2-11/32" x 4-1/4"	Toggle Switch
PI367	(Single Gang)	Blank
PI377	4" x 4"	Toggle Switch
PI371	(Double Gang)	Blank



Rigid Conduit Bodies

Item #	Conduit Size	Includes
PI458	1/2"	Steel Cover, Screws, & Gasket
PI459	3/4"	



Aluminum Bodies can be used indoors or outdoors. Used to gain access to the interior of a raceway for wire pulling, and maintenance.

Surge Arrestors

Surge Arrestors protect valuable single-phase HVAC equipment by dissipating momentary voltage spikes and transient power surges. Power surges, no matter how minor, have a lasting effect on HVAC systems - wearing down compressors, damaging capacitors, and frying circuit boards.

Brand	Item #	Mfg. #	Voltage	Max Surge Protection	Mounting	H x D x W
ICM CONTROLS	ICM517	-	120/240 Single-Phase	100,000 amps	Disconnect	2.2" x 2.8" x 5"
	ICM530	-	208 Wye / 240 Delta 3-Phase	150,000 amps	Disconnect	4.3" x 2.3" x 4.1"
	ICM531	-	480 Delta / 277 Wye Three-Phase	150,000 amps	Disconnect	4.3" x 2.3" x 4.1"
RECTORSEAL	96415	RSH-50	120/240 Single-Phase	50,000 amps	Disconnect	1.7" x 1.7" x 4.4"
	96414	RSH-120	120/240 Single-Phase	120,000 amps	Main Panel	5.25" x 2.5" x 3"
	96422	Flush Mount Plate - for installing RSH-120 in a flush mount breaker panel (2pk.)				



Line Monitors



96421



ICM492C-LF



ICM493



ICM493-60



ICM450+

Line Monitors are ideal for inverter systems and ductless units. They protect against over and under voltage, short cycling, and high-power surges. They have programmable set points for safety cutoff when voltage is out of range. They also have history features to record power fault details.

Brand	Item #	Phase	Voltage	Features	H x W x D
	96421	Single	120v - 240v	<ul style="list-style-type: none"> Built-In Surge Arrestor Latching Relay Technology 	11.8" x 8.5" x 5.8"
	ICM492C-LF	Single	80v - 300v	<ul style="list-style-type: none"> 18v - 240v Control Input for Thermostat Integration 	3.2" x 3" x 1.4"
	ICM493	Single	180v - 264v	<ul style="list-style-type: none"> 5 Built-In Surge Arrestors 40a Contactor 	7.6" x 8.3" x 4.4"
	ICM493-60	Single	195v - 264v	<ul style="list-style-type: none"> 5 Built-In Surge Arrestors 60a Contactor for 5-Ton Units 	8.3" x 10.3" x 6.4"
	ICM450+	Three	190v - 600v	<ul style="list-style-type: none"> 3-phase voltages displayed on LCD Monitors hi/low voltage, voltage imbalance, phase loss & reversal 18v - 240v Control Input Modbus RS485 comm. port 	6.5" x 4.8" x 1.1"

Single-Phase Disconnects



Provides reliable ON/OFF switching control for HVAC systems and mini-splits. Breaks both the power lines (L1 and L2) and the communication line of a mini-split's indoor unit for service.

3-Pole Disconnect Switch

Item #	Amps	Volts
755-303SW	30a	600v

Non-Fused Pull Disconnect with Pre-Installed Surge Arrestor

Item #	Amps	Volts	Surge Arrestor	Case Qty.
96419	60a	240v	RSH50	6



Non-Fused Pull Disconnects

Item #	Amps	Volts	D x W x H	Case Qty.
PD60NF	60a	240v	3.2" x 5.5" x 8.8"	6



Fused Disconnects have fuses located in an easy pull-out handle with indicator lights for blown fuses. Fuses not included.

Fused Pull Disconnects

Item #	Amps	Volts	D x W x H	Fuses	Case Qty.
DDS-30	30a	240v	2.7" x 5" x 7.5"	FLNR005 to 030	10
DDS-60	60a	240v	2.8" x 5.2" x 8.7"	FLNR035 to 060	10

Three-Phase Disconnects

240v 3-Phase Disconnects

Item #	Amps	Volts	Type	Fuses
DG322URB	60a	240v	Non-Fused	N/A
DG322NGB	60a	240v	Fusible	FLNR035 to 060
DG323NGB	100a	240v	Fusible	FLNR070 to 100
DG324NGK	200a	240v	Fusible	FLNR110 to 200



480v 3-Phase Disconnects

Item #	Amps	Volts	Type	Fuses
DH361URK	30a	600v	Non-Fused	N/A
DH361FRK	30a	600v	Fusible	FLSR005 to 030
DH362FRK	60a	600v	Fusible	FLSR035 to 060
DH363FRK	100a	600v	Fusible	FLSR070 to 100

Generator-Ready Disconnects

Quickly and easily run a ductless AC system during a power outage, using only a small portable generator. The compact DSS switch replaces the disconnect on the condenser, and provides an easily accessible port to plug in a small generator.

Item #	Amps	Volts
DSS-15	15a	120v
DSS-30	30a	240v



Fuses from

Class RK5 / Class H Fuses - 250v

Amps	VAC	Item #	Littelfuse #	Bussman #
15	250	FUS02265	FLNR015	FRN-R-15
20	250	FUS02267	FLNR020	FRN-R-20
25	250	FUS02269	FLNR025	FRN-R-25
30	250	FUS02276	FLNR030	FRN-R-30
35	250	FUS01885	FLNR035	FRN-R-35
40	250	FUS01886	FLNR040	FRN-R-40
45	250	FUS01887	FLNR045	FRN-R-45
50	250	FUS01888	FLNR050	FRN-R-50
60	250	FUS01889	FLNR060	FRN-R-60
70	250	FUS02128	FLNR070	FRN-R-70
80	250	FUS01900	FLNR080	FRN-R-80
90	250	FUS00355	FLNR090	FRN-R-90
100	250	FUS01901	FLNR100	FRN-R-100
110	250	FUS00357	FLNR110	FRN-R-110
150	250	FUS01245	FLNR150	FRN-R-150
200	250	FUS00361	FLNR200	FRN-R-200



Class RK5 / Class H Fuses - 600v

Amps	VAC	Item #	Littelfuse #	Bussman #
10	600	FUS01893	FLSR010	FRS-R-10
15	600	FUS01637	FLSR015	FRS-R-15
20	600	FUS01895	FLSR020	FRS-R-20
25	600	FUS02266	FLSR025	FRS-R-25
30	600	FUS01642	FLSR030	FRS-R-30
35	600	FUS02281	FLSR035	FRS-R-35
40	600	FUS02278	FLSR040	FRS-R-40
45	600	FUS02268	FLSR045	FRS-R-45
50	600	FUS02249	FLSR050	FRS-R-50
60	600	FUS02263	FLSR060	FRS-R-60
70	600	FUS00415	FLSR070	FRS-R-70
80	600	FUS00417	FLSR080	FRS-R-80
90	600	FUS00922	FLSR090	FRS-R-90
100	600	FUS01906	FLSR100	FRS-R-100
110	600	FUS00420	FLSR110	FRS-R-110
125	600	FUS00421	FLSR125	FRS-R-125
150	600	FUS00422	FLSR150	FRS-R-150

Class RK5 / Class H 250v Fuse Blocks

Amps	Item #	Fits	Littelfuse #
30	LFR250303C	FLNR / FRN	LFR250303C
60	BLK00381	FLNR / FRN	LFR250603CID
100	BLK00382	FLNR / FRN	LFR251003CID



Class RK5 / Class H 600v Fuse Blocks

Amps	Item #	Fits	Littelfuse #
30	HLD00219	FLSR / FRS	LFR600303CID
60	BLK00388	FLSR / FRS	LFR600603CID
100	LFR601003CID	FLSR / FRS	LFR601003CID

250v Fuse Reducers

Item #	Clip Size	Fits Fuse
LRU263R	60 amp	5 - 30 amp
LRU216R	100 amp	35 - 60 amp



600v Fuse Reducers

Item #	Clip Size	Fits Fuse
LRU663R	60 amp	5 - 30 amp
LRU616R	100 amp	35 - 60 amp

JLLN / JJN Series - 300v Class T Fuses

Amps	VAC	Item #	Littelfuse #	Bussman #
40	300	FUS01780	JLLN040	JJN-40
60	300	FUS02301	JLLN060	JJN-60
80	300	FUS01711	JLLN080	JJN-80
150	300	FUS00905	JLLN150	JJN-150



JLLS / JJS Series - 600v Class T Fuses

Amps	VAC	Item #	Littelfuse #	Bussman #
30	600	FUS02297	JLLS030	JJS-30
40	600	FUS02298	JLLS040	JJS-40
50	600	FUS01252	JLLS050	JJS-50
60	600	FUS02299	JLLS060	JJS-60
70	600	FUS00944	JLLS070	JJS-70
80	600	FUS02300	JLLS080	JJS-80
90	600	FUS00945	JLLS090	JJS-90
100	600	FUS00703	JLLS100	JJS-100
125	600	FUS00906	JLLS125	JJS-125
150	600	FUS00907	JLLS150	JJS-150



JLLN - JJN / JLLS - JJS Fuse Blocks

Amps	VAC	Item #	Fits	Littelfuse #
60	300	BLK01139	JLLN / JJN	LFT300603C
100	300	HLD00582	JLLN / JJN	LFT301003CS
60	600	BLK00587	JLLS / JJS	LFT600603C
100	600	BLK00557	JLLS / JJS	LFT601003C

FLQ/FNQ Time-Delay Midget Fuses

Amps	VAC	Item #	Littelfuse #	Bussman #
15	500	FUS02274	FLQ015	FNQ-15
20	500	FUS02280	FLQ020	FNQ-20



SLC / SC Series - Class G Fuses

Amps	VAC	Item #	Littelfuse #	Bussman #
15	600	FUS01949	SLC-15	SC-15



LMF / GMF In-Line Series Fuses

Amps	VAC	Item #	Littelfuse #	Bussman #
3.2	300	FUS02295	LMF-3-2/10	GMF-3-2/10



SOO / S Series - Plug Fuses

Amps	VAC	Item #	Littelfuse #	Bussman #
3.2	125	FUS02246	SOO-3.2	S-3.2
6.25	125	FUS02283	SOO-6.25	S-6.25



GMF In-Line Fuse Holder

Item #	Littelfuse #	Bussman #
FUS02273	LHR	HLR



MDL Series Slo-Blo Time-Delay Fuses

Amps	VAC	Item #	Littelfuse #	Bussman #
1	250	FUS00207	313001	MDL-1
3	250	FUS02292	313003	MDL-3
5	250	FUS02288	313005	MDL-5



AGC Series Glass Fast-Acting Fuses

Amps	VAC	Item #	Littelfuse #	Bussman #
3	250	FUS02241	312003	AGC-3
5	250	FUS01529	312005	AGC-5
6	250	FUS02294	312006	AGC-6



Panel-Mount Fuse Holder for Glass Fuses

Item #	Littelfuse #	Bussman #
HLD00632	3453LF8A	HBH/HBV



GMD Series - 5mm x 20 mm Slo-Blo

Amps	VAC	Item #	Littelfuse #	Bussman #
3	250	FUS02291	0239003	GMD-3-R



ATO Series In-Line Fuse Holder

Item #	Littelfuse #	Bussman #
FUS02493	0FHA0001	HHD



ATO / ATC Series - Automotive Blade Fuses

Amps	VAC	Item #	Littelfuse #	Bussman #	Pack Qty.
3	32	626-AT0003	ATO-3	ATC-3	5
5	32	626-AT0005	ATO-3	ATC-3	5



Low-Voltage Circuit Breakers



The **Z-Breaker** has the same circuit breakers found on many high-end transformers. It includes wires and terminals for easily plugging in to the connectors where a fuse existed. A sticker is included so that the "reset" button can be easily identified, saving an emergency service call.

Item #	Amps
ZK003	3
ZK005	5



Power Cords

Item #	Length	Gauge	Description
625-16-6	6'	16/3	Bare Wire Power Cord - 110v
89006	2'	12/3	In-Line Tri-Tap Portable GFCI
ZD002			Fused Power Tap (Cheater) Cord - 120v

Electrical Hookup Wire (THHN)

Gauge	Item #	Color	Qty.
8	W801	Black	10' Pack
	W801-50		50' Roll
	W802	Red	10' Pack
	W802-50		50' Roll
	W803	Green	10' Pack
W805	White	10' Pack	

Gauge	Item #	Color	Qty.
10	W101	Black	10' Pack
	W101-50		50' Roll
	W102	Red	10' Pack
	W102-50		50' Roll
	W103	Green	10' Pack
W103-50	50' Roll		
W105	White	10' Pack	

Gauge	Item #	Color	Qty.
12	W121	Black	15' Pack
	W122	Red	15' Pack
	W123	Green	15' Pack
	W123-50		50' Roll
	W125	White	15' Pack
14	W141	Black	20' Pack
	W142	Red	20' Pack
	W143	Green	20' Pack
	W145	White	20' Pack



Thermostat Wire - Solid Core

General Purpose Thermostat Wire

Item #	Gauge / # of Wires	Mfg. #	Length
WIRE-18/2-500	18/2	47104807	500' Spool
WIRE-18/2-500-BG		47105807	500' Bag
WIRE-18/3-500	18/3	47114807	500' Spool
WIRE-18/3-500-BG		47115807	500' Bag
WIRE-18/4-250	18/4	47120307	250' Spool
WIRE-18/4-250-BG		47120907	250' Bag
WIRE-18/5-250	18/5	47130307	250' Spool
WIRE-18/5-250-BG		47130907	250' Bag
WIRE-18/6-250	18/6	47140307	250' Spool
WIRE-18/6-250-BG		47140907	250' Bag
WIRE-18/8-250	18/8	47160307	250' Spool
WIRE-18/8-250-BG		47160907	250' Bag
WIRE-18/10-250	18/10	47180307	250' Spool



Plenum-Rated Thermostat Wire

For code compliance in ductwork & plenum spaces

Item #	Gauge / # of Wires	Mfg. #	Length
WIRE-18/2-PL-500	18/2	47604812	500' Roll
WIRE-18/3-PL-500	18/3	47614812	500' Roll
WIRE-18/4-PL-250	18/4	47620312	250' Roll
WIRE-18/5-PL-250	18/5	47630312	250' Roll
WIRE-18/6-PL-250	18/6	47640312	250' Roll
WIRE-18/8-PL-250	18/8	47660312	250' Roll

Ductless / VRF Power & Communication Wire

14-Gauge / 4-Conductor wire is used for many ductless applications. The 4 conductors deliver both line voltage (power), and low-voltage (communications) from the condenser to the indoor head(s).

16/2 Shielded Stranded wire is often used in VRF systems for communication between the condenser, branch boxes, and indoor units. It can also be used for wired thermostats and sensors.

Item #	Gauge / # of Wires	Mfg. #	Type	Length
WIRE-14/4-50	14/4	10703908	Stranded Black Tray Cable	50'
WIRE-14/4-250		10700108		250'
WIRE-16/2-SH-PL-250	16/2	32210112	Shielded · Stranded · Plenum-Rated (Gray)	250'



Building Automation Systems (BAS) Control Wire

Item #	Mfg. #	Gauge	Wires	Color	Length	Application	Type
CAB01568		18	1 Pair	Purple	100'	Trane Symbio®	
WIRE-18/2-SH-PL-PU-1000	46522110	18	1 Pair	Purple	1000'	Trane® Spec Comm 3/4	Shielded Stranded
WIRE-18/2-SH-PL-NA-1000	32141112	18	2	Natural	1000'	Input-Output Sensor Wire	
WIRE-22/2-SH-PL-WH-1000	32541101	22	1 Pair	White	1000'	Echelon® Comm 5, LonWorks®	Plenum
WIRE-22/3-SH-PL-BL-1000	33242106	22	1.5 Pair	Blue	1000'	JCI®: EIA-485, BACnet®	





Terminal Blocks and Polaris™ Connectors

Double-Row Terminal Blocks

Item #	Type	# of Poles	Amps	Wire Gauge	Image
TB3096-2	Open	2	30a	14 - 22ga.	
TB3096-4	Open	4	30a	14 - 22ga.	
TB3096-6	Open	6	30a	14 - 22ga.	
TB3096-8	Open	8	30a	14 - 22ga.	
ITB20-12	Insulated	12	20a	12 - 22ga.	
ITB50-12	Insulated	(Cuts)	50a	8 - 20ga.	
TBS2-2	Open	2	75a	2 - 14ga.	
TBS2-3	Open	3	75a	2 - 14ga.	

Polaris™ Pre-Insulated Connectors

Image	Item #	Ports	Style	Wire Gauge
	ITD-4B	2	Dual Side	4 - 14ga
	ITD-2B	2	Dual Side	2 - 14ga.
	IPLD4-3B	3	Dual Side	4 - 14ga
	IPLD2-3B	3	Dual Side	2 - 14ga.

Polaris™ heavy-duty pre-insulated UL-rated connectors have setscrews that create weatherproof connections to tap and splice cables without special tools. The insulated housing protects the conductors against abrasion and chemical damage.

Wiring Terminals & Connectors

Winged Wire Nuts

Item #	Wire Gauge	Color	Box Qty.	Image
WWC-R-C	18 - 8	Red	100	
WWC-G-C	18 - 8	Gray	50	
WWC-B-C	14 - 6	Blue	50	



Wire Nuts

Image	Item #	Wire Gauge	Color	Box Qty.
	WC-B-C	22 - 14	Blue	100
	WC-O-C	22 - 14	Orange	100
	WC-Y-C	12 - 10	Yellow	100



Assortments

Item #	Type	Contents	Total Qty.
ET-CP-12	Wire Nuts (Small Sizes)	(65) WC-O · (45) WC-Y (30) WC-R · (40) WWC-T	180
ET-CP-13	Wire Nuts (Large Sizes)	(65) WC-O · (45) WWC-T (50) WWC-Y · (30) WWC-R	185
MTK-2	Terminals	180pc. Assorted Vinyl Terminals with Crimper	180
THK	Heat Shrink	6" Sizes: 1/8" · 1/6" · 1/4" 3/8" · 1/2" · 3/4"	94

Ring Terminals




Item #	Wire Gauge	Stud Size	Color	Pack Qty.	Image
R22-6V-S	22 - 18	#6	Red	25	
R22-8V-S	22 - 18	#8	Red	25	
R22-10V-S	22 - 18	#10	Red	25	
R16-6V-S	16 - 14	#6	Blue	25	
R16-8V-S	16 - 14	#8	Blue	25	
R16-10V-S	16 - 14	#10	Blue	25	
R12-8V-S	12 - 10	#8	Yellow	15	
R12-10V-S	12 - 10	#10	Yellow	10	
R12-14V-S	12 - 10	1/4"	Yellow	20	
R12-38V-S	12 - 10	3/8"	Yellow	10	

Spade Terminals




Image	Item #	Wire Gauge	Stud Size	Color	Pack Qty.
	S22-6V-S	22 - 18	#6	Red	25
	S22-8V-S	22 - 18	#8	Red	25
	S22-10V-S	22 - 18	#10	Red	25
	S16-6V-S	16 - 14	#6	Blue	20
	S16-8V-S	16 - 14	#8	Blue	20
	S16-10V-S	16 - 14	#10	Blue	20
	S12-8V-S	12 - 10	#8	Yellow	15
	S12-10V-S	12 - 10	#10	Yellow	15
	S12-14V-S	12 - 10	1/4"	Yellow	12

Wiring Terminals & Connectors




Butt Connectors

Item #	Wire Gauge	Color	Pack Qty.	Image
B22-V-S	22 - 18	Red	25	
B16-V-S	16 - 14	Blue	20	
B12-V-S	12 - 10	Yellow	20	




Heat Shrink Butt Connectors

Image	Item #	Wire Gauge	Color	Pack Qty.
	SB22	22 - 16	Red	25
	SB16	16 - 14	Blue	25
	SB12	12 - 10	Yellow	25




Male Vinyl Disconnect Terminals

Item #	Wire Gauge	Color	Pack Qty.	Image
M22-250-3V-S	22 - 18	Red	30	
M16-250-3V-S	16 - 14	Blue	30	
M12-250-3V-S	12 - 10	Yellow	25	




Male Fully Insulated Disconnect Terminals

Image	Item #	Wire Gauge	Color	Pack Qty.
	IM22-250-3N	22 - 18	Red	50
	IM16-250-3N-S	16 - 14	Blue	20
	IM12-250-3N	12 - 10	Yellow	50




Female Vinyl Disconnect Terminals

F22-250-3V-S	22 - 18	Red	25	
F16-250-3V-S	16 - 14	Blue	25	
F12-250-3V-S	12 - 10	Yellow	15	



Female Fully Insulated Disconnect Terminals

	IF22-250-3N	22 - 18	Red	50
	IF16-250-3N-S	16 - 14	Blue	12
	IF12-250-3N-S	12 - 10	Yellow	12



Female Flag & Compressor Terminals

Item #	Wire Gauge	Pack Qty.	Image
SF16-250-3-S	16 - 14	20	
SF12-250-3-S	12 - 10	15	
FCT12-250-3-S	12 - 8	15	




Fully Insulated Flag Terminals

Image	Item #	Wire Gauge	Pack Qty.
	IFL16-250-3N	16 - 14	50
	IFL12-250-3N-S	12 - 10	12

"Piggyback" Vinyl Adapters

Item #	Wire Gauge	Color	Pack Qty.	Image
P16-250-3V-S	16 - 14	Blue	15	
P12-250-3V	12 - 10	Yellow	50	

Double Male + Female Bare Adapters

Image	Item #	Type	Size	Pack Qty.
	DMT250-3-S	Flat	.250	15
	250-3MFM	Piggy-Back	.250	100
	250-3-Z	Chair	.250	100



Cable Ties & Mounting Accessories

Cable Ties

Item #	Length	Color	Pack Qty.
DT4B	4"	Black UV	100
DT6B	8"	Black UV	100
DT11B	11"	Black UV	100
DT14B	14.5"	Black UV	100
36 IN DUCT TIES	36"	Natural	50
48 IN DUCT TIES	48"	Natural	50



Cable Tie Mounts & Clamps

Image	Item #	Description	Pack Qty.
	WTM1	Adhesive Cable Tie Mount	4
	WTM2	Screw-Down (#8) Cable Tie Mount	7
	WCA1	Cable Clamp Assortment: 1/8" to 1"	26



Cable Ties with Mounting Holes

Item #	Length	Color	Pack Qty.
DTM6B	8"	Black UV	100
DTM14B	14.5"	Black UV	100



Wire & Cable Grommets

For safely routing wires through sharp holes

Image	Item #	Description	Pack Qty.
	GVA1	1/4" to 1/2" Assortment	15
	GVA2	5/8" to 1" Assortment	5

Index

Abrasive Pads	32	Drive Cleat	11	Generator-Ready Disconnects	38
Access Doors	11	Dryer Boxes & Venting	16 - 17	GFCI Power Cords	39
Acetylene	32	Drywall Anchors & Screws	9	Glues	
ACR Copper Pipe	30	Duct		ArmaFlex®	8, 35
Air Handler Blocks & Stands	5	Board	10	Mastic	8
Air Pressure Switches	23	Booster Fans	20	PVC	26
All Thread	2	Connectors	14	Grilles	24 - 25
Aluminum Repair	32	Elbows	15	Grommets	42
Aluminum Stands	7	Flex Duct & Liner	10	Heat Block	32
Aluminum Tapes	8	Mixing Boxes	10	Heat Shrink Tubing	41
Anchors		Pipe	15	Heater Feet	5
Concrete	6	Saddles	11	Hookup Wire	40
Drywall	9	Smoke Detection	23	Hose Clamps	28
Threaded Rod	3	Strap & Ties	11	Hurricane Pads	6
ArmaFlex® Insulation & Glue	35	Tapes	8	Inline Fans	20
Attic Insulation	11	Triangles	10	Insulation	11
Attic Tent® Enclosures	11	Wrap	10	Insulation Edge Sealer	9
Automotive Fuses	39	Wyes	15	Insulation Tubing & Sheets	35
Backdraft Dampers	16	Non-Insulated Thermofin®	16	Isolators	4
Boxes		Ductless Wire	40	Junction Boxes	36
Dryer	16	Edge Sealer	9	Kitchen Exhaust	17, 22
Supply & Return	13	Elbows	15	Knockout Washers	36
Brackets, Condenser	6	Electrical Boxes & Conduit	36	Latex Caulk	9
Brazing Gases & Rod	32	Electrical Tape	8	Line Monitors	37
Brushes		Equipment Stands	7	Liner, Duct	10
Mastic	8	Exhaust Fans	20 - 22	Lineset Covers	34
Wire	32	Exhaust Grilles	20	Lineset Flashings (Roof)	19
Butt Connectors	42	Exhaust Vents	17	Lineset Flashings (Wall)	34
B-Vent	18	Fans		Lineset Tape & Wrap	8, 35
Cable Mounts - Clamps - Ties	42	Bath & Exhaust	10	Liquid-Tite Conduit & Fittings	36
Cages	7	Inline	20	Lock Washers	2
Caulk & Caulk Guns	9	Rooftop	22	Locking Caps	34
Caution Tape	8	Fender Washers	2	Loose Fill Insulation	11
"Cheater" Power Cords	39	Fire Foam & Caulk	9	Low-Voltage Circuit Breakers	39
Check Valves	28	Fittings		MAPP Pro Gas	32
Circuit Breakers	39	Black Iron	29	Masonry Anchors	6
Cleaning Pads	32	Condensate	28	Mastic, Brushes, & Tape	8
Cleat (Drive and "S")	11	Copper	31	Metal Strap	11
Collars	14	PRO-Fit™	30	Mini-Split Wire	40
Communication Wire	40	PVC	26	Mixing Boxes	10
Concrete Anchors	6	Flag Terminals	42	Nail Plates	30
Condensate Pumps & Switches	27 - 28	Flame Blankets	32	Nipples	29
Condenser Brackets & Cages	6 - 7	Flare Gaskets & Nuts	31	Nitrogen	32
Condenser Pads & Tie Downs	6	Flashings		"No Hole" Boxes	13
Conduit, Bodies, and Clamps	36	Rooftop	18 - 19	Nuts, Hardware	2
Concentric Vents	18	Lineset	34	Nylon Strap	11
Connectors & Terminals	41	Flat "S" Cleat	11	One-Hole Straps	36
Connectors, Duct	14	Flat Washers	2	Oxygen	32
Construction Adhesives	9	Flex Connectors	14	Pads, Condenser	6
Copper Pipe & Fitting	30 - 31	Flex Duct	10	Panduit Straps	11, 42
Cork Tape	8	Float Switches	27	Pans, Drain	5
Curb Tape	8	Flux	32	Phase Monitors	37
Cush Clamps	2	Foam Spray & Tape	8 - 9	Pipe	
Dampers		Fresh Air Ventilation	17, 19	Black Iron	29
Blade	14	Furnace Pig Tails	39	Clamps	2
Backdraft	16	Furnace Stands	5	Copper (Soft & ACR)	30
Radiation	21	Fuse Blocks & Reducers	38 - 39	Dope (Sealant)	29
Diffusers	24 - 25	Fused Disconnects	37	Duct (Snaplock)	15
Disconnects	37 - 38	Fuses	38 - 39	Supports	3
Drain Pans	5	Gas Line, Pipe, & Fittings	29	Pre-Insulated Copper	30
		Gas Valves & Thread Tape	29	PVC	26
		Gases, Brazing	32	Insulation	35
		Gasket Tape	8	Plenum Wire	40
		Generator Pads	6	Plenums	12

Index Cont.

Plumber's Strap	11	Styrofoam Blocks	5
Polaris™ Connectors	41	Submersible Pumps	28
Pooky	8	Supply Plenums	12
Power Cords	39	Surge Arrestors	36
Press Fittings	33	Swivel Flare Adapters	31
Primary Wire	40	System Sensor®	23
PRO-Fit™ Fittings	30	Take-Off Collars	14
Pumps, Condensate	28	Tape, Gas Thread Seal	29
PVC Pipe, Fittings, & Glue	26	Tapes	8
Radiation Dampers	21	Terminal Connectors & Blocks	41
Range Hood Exhaust	17, 22	Thermodin® Duct	16
Reducers		Thermostat Wire	40
Duct/Pipe	15	Thermo-Trap® Heat Paste	32
Fuse	38	Threaded Rod & Rod Hardware	2 - 3
Reducing Washers	36	Tie Downs	6
Refrigerant Locking Caps	34	Transitions	12
Register Boxes	13	Tread Tape	8
Register Screws	9	Triangles	10
Registers (Grilles)	24 - 25	Tubing	
Return Plenums	12 - 13	Copper	30
Ring Terminals	41	Heat Shrink	41
Rod Anchors & Couplers	2 - 3	Insulation	35
Romex Connectors	36	Vinyl	28
Roof		UltraLite Pads	6
Flashings	18 - 19	Unistrut & Unistrut Hardware	2 - 3
Jacks	19	Vents	
Stands	7	Concentric	18
Vents	19	Dryer	16 - 17
Rooftop Blocks	3	Furnace B-Vent	18
Rooftop Fans	22	Roof	19
RoughinBox	29	Soffit & Wall	17
Safety Switches	27	Vibration Isolators & Pads	4
Sampling Tubes	23	Voltage Monitors	37
Sand Cloth	32	VRF Wire	40
Screws	9	Wall-Mount Brackets	6
Security Cages	7	Wallstack Duct & Fittings	17
Self-Tapping Screws	9	Washers	
Shielded Piping Insulation	35	Hardware	2
Silicone Caulk	9	Reducing/Knockout	36
Silver Solder	32	Webbed Strap	11
Smoke Detection & Testing	23	Whips, Electrical	36
Snaplock Pipe	15	Wire	
Soffit Vents	17	Brushes	32
Solder	32	Communication	40
Spade Terminals	41 - 42	Grommets	42
Spray Adhesives & Foams	9	Hookup	40
Spring Nuts	2	Mounts & Clamps	42
Square Washers	2	Nuts & Ties	41 - 42
Stands, Air Handler	5	Thermostat	40
Stands, Condenser	7	Wrap, Duct	10
Start Collar	14	Wyes	15
Strap	11	Zip Ties	42
Strut & Strut Hardware	2 - 3	ZoomLock® Fittings & Tools	33

