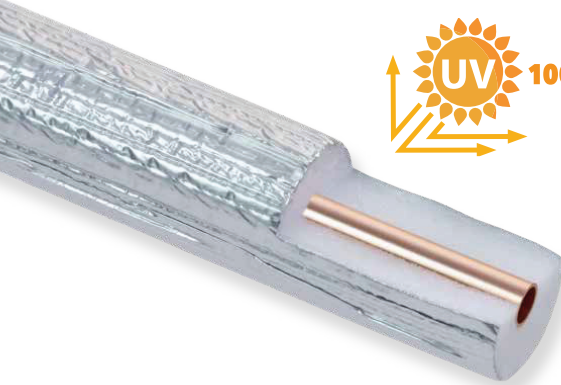


# Coveral

## Pre-Insulated Ductless Linesets *Tear-Resistant / 100% UV Resistant*



- Pre-insulated ASTM B280 compliant copper tube
- Extruded closed-cell polyethylene foam
- Sealed at a pressure of over 70 for the perfect inner cleanliness of the tubes
- Vapor Permeability  $\mu \geq 11.000$  for the best anti-condensation performance
- 100% UV resistant aluminum outer jacket protects from direct sunlight and other atmospheric agents

# 25', 50', and 164' rolls in stock!

## Why use a 164' roll?

- Avoid braze joints on longer line runs
- Create multiple linesets on multi-zone jobs. Avoid excess scrap by unrolling and cutting your exact size requirements for each line.



Item #	Line Length	Copper O.D.	Insulation Thickness	Insulation R-Value
COP-INS-025-025F	25'			
COP-INS-025-050F	50'	1/4"	.5"	4.5
COP-INS-025-164F	164'			
COP-INS-037-025F	25'			
COP-INS-037-050F	50'	3/8"	.5"	4.0
COP-INS-037-164F	164'			
COP-INS-050-025F	25'			
COP-INS-050-050F	50'	1/2"	.531"	4.0
COP-INS-050-164F	164'			
COP-INS-062-025F	25'			
COP-INS-062-050F	50'	5/8"	.555"	4.0
COP-INS-062-164F	164'			
COP-INS-075-050F	50'	3/4"	.579"	4.0

Technical Features	
Flame spread and Smoke developed	ASTM E84 Test result 25/50
Water vapor transmission	ASTM E96 (0.044)
Heat resistant insulation	ASTM C411 (up to 220 °F)
UV resistance	ASTM G154 according to ASTM C 1775 / ASTM G155
Steam factor	$\mu \geq 11.000$
Insulation density	30 ± 3 kg/m3
R value at 75.2 °F	From 4.0 up to 4.5 for diameter 1/4"
Aluminum jacket covering the insulation with a special process / no glue used	
25 ft. rolls are marked every 5 ft. 50 ft. and 164 ft. rolls are marked every 2 ft.	