

Honeywell | Generators **2024**

Air-Cooled Standby Generators | 2

Single Phase Transfer Switches | 2

Generator Pads & Mounting | 3

Smart Management Modules | 3

Soft Starters | 3

Commercial Generators | 4 - 5

Three Phase Transfer Switches | 5

Generator Wire | 6

Maintenance Kits | 6

Portable Generators | 7

Portable Standby Solutions | 7

Generator Ready Disconnects | 7



281-486-8661 | 1-877-486-8661
www.HuntonDistribution.com

Whole-Home Standby Generators

10kW - 26kW: Air-Cooled (LP/NG)

Mobile Link® Wi-Fi Connectivity: Honeywell standby generators are Wi-Fi enabled. Now you can remotely connect and monitor its status on a smartphone, tablet, or PC using Mobile Link's free service.

Premium 5-year Limited Warranty: Honeywell Generators carry a best-in-class Premium 5 Year Limited Warranty for automatic standby generators. Includes parts and labor.

PrecisionPower™ Technology: Superior harmonics and sine wave form produce less than 5% Total Harmonic Distortion for utility quality power. This allows confident operation of sensitive electronic and microchip based appliances, such as variable speed HVAC.


WhisperCheck™ self-test mode runs at a lower RPM for a five minute test, is significantly quieter than other brands, and consumes less fuel.

All-Weather Aluminum Enclosure: The durable aluminum enclosure with RhinoCoat™ finish provides corrosion-resistant protection from the elements, making it ideal for coastal, salt-air climates. Modeled to withstand winds up to 150 mph.

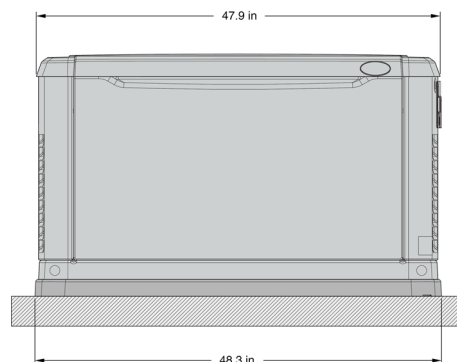
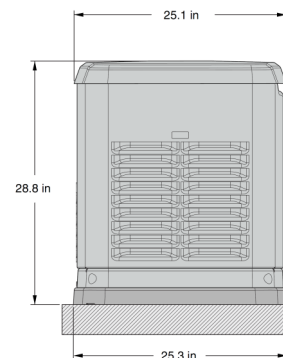
18" (457 mm) Offset: Listed and labeled by the Southwest Research Institute allowing installation as close as 18" (457 mm) to a structure.*

*Must be located away from doors, windows, and fresh air intakes and in accordance with local codes.



Generator	18kW	22kW	24kW	26kW
Model #	7230	7065	7213	7292
Engine Displacement	816cc	999cc	999cc	999cc
RPM	3,600			
Main Circuit Breaker	80 amp	90 amp	100 amp	110 amp
Voltage (Single Phase)	240v			
Rated Max. Continuous Power (LP)	18,000 Watts*	22,000 Watts*	24,000 Watts*	26,000 Watts*
Rated Max. Continuous Power (NG)	17,000 Watts*	19,500 Watts*	21,000 Watts*	22,500 Watts*
Amps @ 240V LPG	75	92	100	108
Amps @ 240V NG	71	81	88	94
db(A) at Exercise	55	57	57	57
db(A) at Normal Operating Load	65	67	67	67
Weight (lbs.)	420	445	455	518
 Maintenance Kit (w/o Oil)	7216	6485	6485	6485
Dimensions (L" x W" x H")	48 x 25 x 29			
ETL/CETL Listed	Yes			
Standard with Mobile Link	Free Wi-Fi			
26R Battery	*** Generator Does Not Ship with a Battery ***			

* No overload capability is available for this rating. (All ratings in accordance with BS5514, ISO3046, UL2200, and DIN6271). Maximum kilovolt amps and current are subjected to and limited by such factors as fuel BUT/megajoule content, ambient temperature, altitude, engine power and condition, etc. Maximum power decreases approximately 3.5% for each 1,000 ft (304.8 m) above sea level and approximately 1% for each 10 °F (6 °C) above 60 °F (16 °C)



Sync™ Smart Transfer Switches

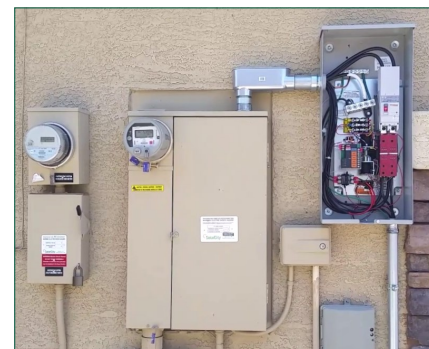
100 - 400amp / Single Phase

What Does It Do? The transfer switch monitors the building's utility power. When it detects a disruption in power (usually of 10 seconds or more) it starts the generator. When the generator is producing the correct amount of electricity, it closes the connection with utility power and opens the connection with generator power, supplying power to the building. When utility power is restored, the transfer switch detects it, closes the connection to generator power, opens the connection to utility power, and powers down the generator.

Honeywell Sync Switches are designed for use with single phase generators. The 100, 150, and 200, amp open transition switches are available in single phase in both service rated and non-service rated configurations.



Transfer Switch	100amp	150amp	200amp	400amp
Model #	RXSM100A3	RXSM150A3	RXSM200A3	RTSM400A3
Amps	100	150	200	400
Voltage	120/240 1Ø			
Load Transition Type	Open Transition Service Rated			
Enclosure Type	NEMA 3R			
Withstand Rating (Amps)	10,000	22,000	22,000	22,000
Lug Range	2/0 - #14	250 MCM - #6	250 MCM - #6	600 MCM - #4
Weight (lbs.)	22.5	39	39	140
Height (inches)	20	30	30	48
Width (inches)	14.6	13.5	13.5	21.8
Depth (Inches)	7.1	7.1	7.1	10



Generator Mounting

GenPad®

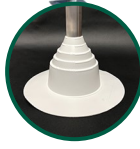
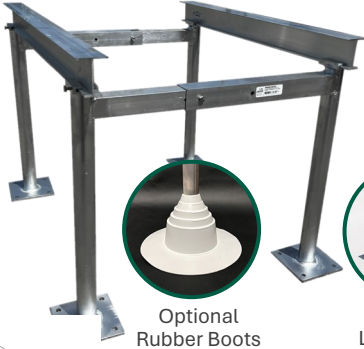
GenPad®
A composite pad with pre-drilled mounting holes. Fits Generac & Honeywell 8-26kW standby generators.



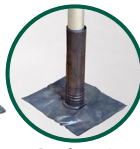
Type	Item #	Size	Application	Weight	Pallet Qty.
GenPad®	GENPAD-3	54" x 31" x 3"	8 - 26kW Generators	189 lbs.	5
	GENPAD-4	54" x 31" x 4"	8 - 26kW: Hurricane-Rated	275 lbs.	5
	10000044173	70" x 37" x 4"	25 - 30kW Liquid Cooled	350 lbs.	1
	A0000516140	90" x 41" x 4"	32 - 48kW Liquid Cooled	470 lbs.	1

Aluminum Equipment Stands

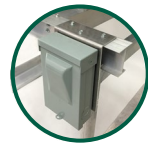
Aluminum Mechanical Unit Stands are engineered for use within hurricane zones (HVHZ - Miami-Dade County & Broward County). Carrying a Florida State Approval, these stands are available with optional cross-mounting angles, rubber boots, lead boots, and electrical mounting brackets.



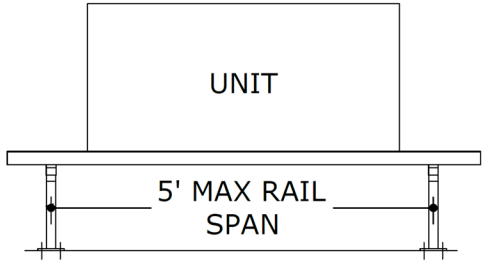
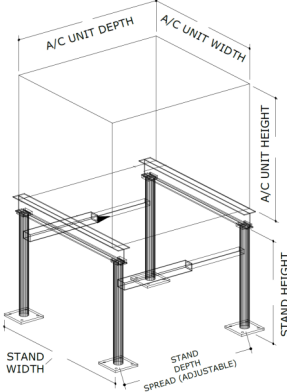
Optional Rubber Boots



Optional Lead Boots



Optional Electrical Mounting



Legs: Minimum of (2) Required

Item #	Height	Adjustable Width
ASMUS18	18"	20" - 30"
ASMUS24	24"	
ASMUS30	30"	
ASMUH18	18"	34" - 42"
ASMUH24	24"	
ASMUH30	30"	

I-Beams: (2) Required

Item #	Length
ASI-3	3'
ASI-6	6'
ASI-9	9'
ASI-12	12'
ASI-15	15'
ASI-18	18'

Smart Management Module

Designed to optimize the performance of a standby generator. The system can consist of up to eight individual Smart Management Modules (SMMs). Unlike other load management systems, the SMM modules are self-aware and operate autonomously.

Frequency Monitoring: The modules monitor the frequency (Hz) of the power produced by generator. If frequency falls below a certain threshold, the module will automatically follow a power management algorithm to reduce the chance of a generator overload condition.

Load Priority Setting: Modules are set to a load priority between 1-8, or set in a lock-out mode for loads that do not need to run in an outage. This reduces the minimum size of the generator for a more cost effective solution.

Item #	Amps / Ph.	H	W	D
7001	50 / 1Ø	6.2"	7.1"	3.7"
7006	100 / 1Ø	7"	11.4"	5.3"



Micro-Air EasyStart™ Soft Starter



Micro Air EasyStart™ employs a 4-part start ramp sequence that is self-optimizing, resulting in the lowest possible start-up current. It can deliver 65-75% start current reduction as compared to a compressor's LRA (locked-rotor amperage). EasyStart allows an air conditioner compressor to operate on a generator, inverter, or limited utility power when it would otherwise not have functioned. It can also be applied to air compressor and fluid pump motors.

 **Bluetooth for Troubleshooting & Updates Via the EasyStart App**

Item #	For AC Size	Voltage	L	W	D
ASY-364-X36-BLUE	Up to 18,000 BTU	240 / 1Ø	7.64"	3.58"	2.5"
ASY-368-X48-BLUE	24,000 - 42,000 BTU	240 / 1Ø	9.45"	4.72"	2.95"
ASY-368-X72-BLUE	48,000 - 72,000 BTU	240 / 1Ø	9.45"	4.72"	2.95"

Large Residential & Commercial Generators

22 - 150kW: Liquid-Cooled (LP/NG)



RG025 / RG030



XG032 / XG040



HG048 - HG080

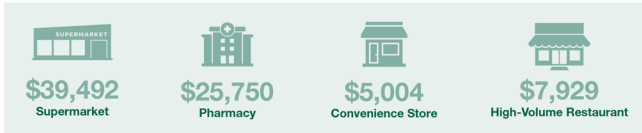


HG100 - HG150

Power businesses with the leader in standby power.

Thousands of businesses rely on Generac & Honeywell automatic standby generators to provide backup power when the utility goes down. Generac's automatic standby generators come on within seconds of a utility power outage to power your electrical loads, ensure safety, and prevent the loss of revenue.

What's the cost of downtime during a power outage?



*Data shown using 2017 and 2019 Generac Power Outage Data reports. Average outage time of 9 hours, per 2019 data.

1,800 RPM engines (32kW and above): These heavy-duty engines get their power from displacement, not speed - providing the ability to run in prime or standby applications. They have quieter performance and longer life.

TruePower™ Technology: Delivers best-in-class power quality with less than 5% total harmonic distortion for clean, smooth operation of sensitive electronics and appliances.

24/7/365 Customer Support Team: Standing by all day, every day from Wisconsin to answer any questions you might have.

Smart, User-Friendly Controls: The Evolution Controller features a multilingual LCD display that allows users to monitor maintenance intervals to ensure the generator is always in top operating condition.

Mobile Link™ Connectivity: Mobile Link allows you to monitor the status of your generator from anywhere in the world using a smartphone, tablet, or PC. Easily access information, such as the current operating status and the generator's maintenance schedule. Connect your account to an authorized service dealer for fast, friendly and convenient assistance.

Ideal Industries & Applications

- Convenience Stores & Gas Stations
- Offices & Server Rooms
- Manufacturing, Industry & Distribution
- Restaurants & Bars
- Larger Homes or Homes with Guest Houses

Model #	Voltage Phase Power Factor	kW (LPG)	Amps (LPG)	kW (NG)	Amps (NG)	Circuit Breaker Size
RG025	120/240 V, 1Ø, 1.0 pf	25	104	25	104	125
	120/208 V, 3Ø, 0.8 pf	25	87	25	87	100
	120/240 V, 3Ø, 0.8 pf	25	75	25	75	90
RG030	120/240 V, 1Ø, 1.0 pf	30	125	30	125	150
	120/208 V, 3Ø, 0.8 pf	30	104	30	104	125
	120/240 V, 3Ø, 0.8 pf	30	90	30	90	100
XG032	120/240 V, 1Ø, 1.0 pf	32	133	32	133	150
	120/208 V, 3Ø, 0.8 pf	32	111	32	111	*** See Note
	120/240 V, 3Ø, 0.8 pf	32	96	32	96	Note
	277/480 V, 3Ø, 0.8 pf	32	48	32	48	Note
XG040	120/240 V, 1Ø, 1.0 pf	40	167	40	167	200
	120/208 V, 3Ø, 0.8 pf	40	139	40	139	*** See Note
	120/240 V, 3Ø, 0.8 pf	40	120	40	120	Note
	277/480 V, 3Ø, 0.8 pf	40	60	40	60	Note
HG048	120/240 V, 1Ø, 1.0 pf	48	200	48	200	200
	120/208 V, 3Ø, 0.8 pf	48	167	48	167	175
	120/240 V, 3Ø, 0.8 pf	48	144	48	144	150
	277/480 V, 3Ø, 0.8 pf	48	72	48	72	80
HG060	120/240 V, 1Ø, 1.0 pf	60	250	60	250	300
	120/208 V, 3Ø, 0.8 pf	60	208	60	208	200
	120/240 V, 3Ø, 0.8 pf	60	180	60	180	200
	277/480 V, 3Ø, 0.8 pf	60	90	60	90	100
HG080	120/240 V, 1Ø, 1.0 pf	75	312	80	333	400
	120/208 V, 3Ø, 0.8 pf	75	260	80	277	300
	120/240 V, 3Ø, 0.8 pf	75	226	80	240	300
	277/480 V, 3Ø, 0.8 pf	75	113	80	120	150
HG100	120/240 V, 1Ø, 1.0 pf	96	400	96	400	400
	120/208 V, 3Ø, 0.8 pf	100	347	96	333	400
	120/240 V, 3Ø, 0.8 pf	100	300	96	288	350
	277/480 V, 3Ø, 0.8 pf	100	150	96	144	175
HG130	120/240 V, 1Ø, 1.0 pf	130	542	130	542	600
	120/208 V, 3Ø, 0.8 pf	130	451	130	451	500
	120/240 V, 3Ø, 0.8 pf	130	391	130	391	400
	277/480 V, 3Ø, 0.8 pf	130	195	130	195	225
HG150	120/240 V, 1Ø, 1.0 pf	134	558	144	600	700
	120/208 V, 3Ø, 0.8 pf	140	486	150	520	600
	120/240 V, 3Ø, 0.8 pf	140	421	150	451	500
	277/480 V, 3Ø, 0.8 pf	140	210	150	226	250

*** Units are field convertible to 208v 3Ø, 240v 3Ø, or 480/277v 3Ø with the addition of a Voltage Configuration Cartridge and Circuit Breaker Kit.

Generator	25kW	30kW	32kW	38kW	48kW	60kW	80kW	100kW	130kW	150kW
Model #	RG025	RG030	XG032	XG040	HG048	HG060	HG080	RG100	RG130	RG150
Engine	4cyl. In-Line 1.5 Liter		4-Cylinder In-Line 4.5 Liter			4-Cyl. In-Line 4.5 Liter		8.9 Liter V8		
RPM	3,600 rpm		1,800 rpm			1,800 rpm		1,800 rpm		
Intake Air System	Naturally Aspirated		Naturally Aspirated			Turbocharged & Aftercooled		Naturally Aspirated	Turbocharged & Aftercooled	
db(A) at Exercise	59		58	68		68		71	78	80
Weight (lbs.)	777	807	1,781			1,890	1,990	2,848	3,009	3,278
Dimensions (L" x W" x H")	63 x 31 x 39		84 x 35 x 46			98 x 38 x 49		111 x 40 x 70	133 x 41 x 64	143 x 51 x 68
Available Voltages & Phases	120/240v 1Ø 120/208v 3Ø 120/240v 3Ø		120/240v 1Ø • 120/208v 3Ø • 120/240v 3Ø • 277/480v 3Ø							

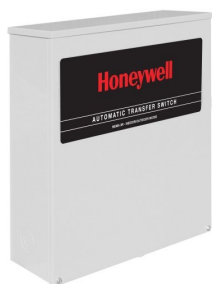
Model #	Voltage • Phase Power Factor	kW (Standby)	Amps (Standby)	kW (Prime)	Amps (Prime)	Circuit Breaker Size
RD015	120/240 V, 1Ø, 1.0 pf	15	62	12	50	70
	120/208 V, 3Ø, 0.8 pf	15	52	12	42	60
	120/240 V, 3Ø, 0.8 pf	15	45	12	36	50
RD020	120/240 V, 1Ø, 1.0 pf	20	83	16	67	100
	120/208 V, 3Ø, 0.8 pf	20	69	16	56	80
	120/240 V, 3Ø, 0.8 pf	20	60	16	48	70
RD030	120/240 V, 1Ø, 1.0 pf	30	125	24	100	150
	120/208 V, 3Ø, 0.8 pf	30	104	24	83	125
	120/240 V, 3Ø, 0.8 pf	30	90	24	72	100
	277/480 V, 3Ø, 0.8 pf	30	45	24	36	50
RD048	120/240 V, 1Ø, 1.0 pf	48	200	38.4	183	200
	120/208 V, 3Ø, 0.8 pf	50	173	40	153	200
RD050	120/240 V, 3Ø, 0.8 pf	50	150	40	132	175
	277/480 V, 3Ø, 0.8 pf	50	75	40	66	90

Generac's diesel-powered Protector Series features a set of popular preconfigured options and a range of code-driven accessories, so you can feel confident that your generator will be able to conform to the required local codes. The Protector Series is versatile, adaptable, meets UL requirements, and is an affordable optional standby diesel generator for your backup power needs.

- Two Line LCD Digital Evolution™ Controller with external viewing window for easy indication of generator status and breaker position.
- Isochronous electric governor
- UV / Ozone Resistant hoses
- Integrated base tank options with run times over 90 hours without refueling (1/2 max kW output)
- Meets code requirements for external vent and fill.



Specifications	15 kW	20 kW	30 kW	48/50 kW
Model Number	RD015	RD020	RD030	RD048 / RD050
Engine	2.5L		2.2L	3.3L
Intake Air System	Naturally Aspirated		Turbocharged & Aftercooled	
Fuel Consumption @ full load: gal/hr	1.46	1.97	2.77	4.02
Fuel Consumption @ 1/2 load: gal/hr	0.85	1.03	1.37	2.02
Standard Dimensions (L" x W" x H")	81 x 31 x 51		95 x 35 x 59	95 x 35 x 57
Weight (lbs.) Standard Tank	1,528		1,857	2,215
Long Run Time Tank Dimensions	81 x 31 x 61		95 x 35 x 68	95 x 35 x 66
Weight (lbs.) Long Run Time Tank	1,757		2,070	2,429
db(A) at Exercise	65			
db(A) Normal Operating Load	70			
Mobile Link Connectivity	Included			



Commercial 3-Phase Transfer Switches

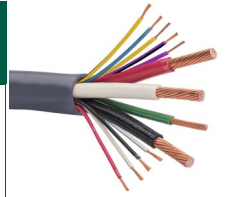
Model #	100amp			200amp			400amp		
	RTSZ100G3	RTSZ100J3	RTSZ100K3	RTSZ200G3	RTSZ200J3	RTSZ200K3	RTSZ400G3	RTSZ400J3	RTSZ400K3
Amps	100								
Voltage	120/208 3Ø	120/240 3Ø	277/480 3Ø	120/208 3Ø	120/240 3Ø	277/480 3Ø	120/208 3Ø	120/240 3Ø	277/480 3Ø
Withstand Rating (Amps)	10,000	14,000	14,000	10,000	25,000	25,000	18,000	18,000	18,000
Lug Range	2/0 - #14			400 MCM - #4			600 MCM - #4 or (2) 250 MCM		
Weight (lbs.)	20	53	105	20	53	110	133	133	133
Height (inches)	24.1	24.1	36.1	24.1	24.1	48.1	36.1	36.1	48.1
Width (inches)	20.2	20.2	24.0	20.2	20.2	30.1	24.0	24.0	30.1
Depth (Inches)	7.1	7.1	7.1	7.1	7.1	13.1	10.0	10.0	13.1
Transition Type	Open Transition			Open Transition			Open Transition		
Enclosure Type	NEMA 3R			NEMA 3R			NEMA 3R		

Generator Wire

Power and Control Wire Specific to Honeywell / Generac Generators: Wires are numbered to match the Generac terminals, and the wire colors also match the Generac terminals. Direct Burial and UV Resistant Jacket. Reduce scrap on the job site with different available lengths of cable on reels (100', 250', 500', 1,000', 2,500')

NEC 2023 Code Compliant Neutral Wires: Blue/White (Battery) & Purple + Purple/Black (E-Stop)

Item #	Conductor Material	Generator kW Range	Max Breaker	3-Conductor (Power) Black - White - Red	1-Conductor (Ground) Green	9-Conductor (Control) (Black, Red, Yellow, Yellow/Black, White, Blue, Purple, Purple/Black, White/Blue)	Length
CM-HSBCC-LRGPLUS2-JT84	Copper	17kW - 24kW	100A	3 AWG Cu	8 AWG Cu	100'	
CM-HSBCC-ALUMPLUS2-JT93	Aluminum	17kW - 24kW	100A	1AWG Al	6 AWG Al		
CM-HSBCC-2361PLUS2	Copper	17kW - 26kW	125A	2 AWG Cu	6 AWG Cu		



Maintenance Kits

Scheduled Maintenance is a Necessity for all Standby Generators

Scheduled Maintenance Kits include all the necessary components to perform complete routine maintenance on Honeywell and Generac generators*. Maintenance is recommended at every 200 hours, or 2 years, whichever comes first. If running in a dusty or dirty environment, more frequent maintenance may be required. Maintenance intervals may differ per model. See the generator owner's manual for more information.

*Oil not included. Oil must be purchased separately.



Kit	Generator Description	Generator Model #		
5655	25kW & 30kW (Nexus)	QT02516	QT03016	
5656	22kW & 27kW (Nexus & Evolution)	QT02224	RG02224	
		QT02724	RG02724	
5658	48kW (Nexus)	QT04842	QT13068	
5660	70kW - 150kW (Nexus)	QT07068	QT10068	QT15068
5662	8kW (Nexus)	5870	5882	
5663	10kW (Nexus)	5871	5883	6051
		5872	5884	6052
		5873	5885	6053
5664	14kW - 17kW (Nexus)	5874	5886	5887
		5875		
5665	20kW (Nexus)	5875		
		QT03624	RG03624	
5984	32kW - 38kW (Nexus)	RG03224	RG03824	
		QT08046		
6003	7kW CorePower	5837	5888	
6004	6kW EcoGen (Nexus)	5818		
6171	60kW (Nexus & Evolution)	QT06024	RG06024	
6172	45kW (Nexus & Evolution)	QT04524	RG04524	
6176	25kW - 30kW (Nexus & Evolution)	QT02515	RG02515	
		QT03015	RG03015	
6205	48kW (Nexus & Evolution)	HG04845	QT04854	RG04854
		6237	7029	7171
		6245	7030	7172
6482	8kW - 10kW (Evolution)	6251	7057	7179
		6269	6441	7058
6483	8kW - 11kW (Evolution) (For 2013 and later HSB models)	6437	6720	7044
		6438	7031	7047
		6439	7032	7144
		6440	7033	

Kit	Generator Description	Generator Model #		
6484	14kW - 17kW (Evolution) (For 2013 and later HSB models)	6240	6255	6462
		6241	6256	6721
		6242	6257	6858
		6243	6270	6859
		6245	6271	7035
		6247	6281	7036
		6248	6459	7037
		6249	6461	
		6485	13kW - 26kW (Evolution) (For 2013 and later HSB models)	6244
6250	7043			7163
6258	7046			7189
6551	7048			7209
6552	7049			7210
6729	7059			7218
6730	7062			7219
7035	7065			7065
7036	7077			7213
7037	7078			7292
7038	7141			
7039	7142			
6570	48kW - 50kW Diesel (Evolution)	RD04834	RD05034	
6571	30kW Diesel (Evolution)	RD03024		
6572	15kW - 20-kW Diesel (Evolution)	RD01523	RD02023	
6806	5.6 kVA - 7.5kW PowerPact	6518	6520	6998
		6519	6561	
6829	15kW - 20kW Synergy & EcoGen (Evolution)	6055	6103	7040
		6098	7034	7041
6915	80kW (Nexus)	QT08054		
7216	13kW - 18kW	7173	7176	7229
		7174	7177	7230
		7175	7178	
7640	15kW & 20kW Diesel (Evolution)	RD01525	RD02025	
7641	30kW Diesel (Evolution)	RD03022		
7642	48kW & 50W Diesel	RD04833	RD05033	
9882	100kW - 150kW	HG10090	HG13090	HG15090

Portable Generators

Clean Power for Sensitive Electronics



7247



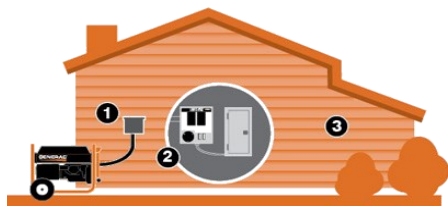
8917

Choosing the right generator: Ductless units and other home appliances with circuit boards as well as other electronic devices can be damaged by significant power fluctuations. An inverter or “clean power” generator with less than 6% THD (total harmonic distortion) is recommended for these applications.

Item #	Model	Voltage	Running Watts	Starting Watts	Total Harmonic Distortion	Outlets	Weight	Fuel Tank Size
7247	XT8500EFI Electronic Fuel Injection	120/240v	8,500	10,000	Less than 5%	(2) 120V 20A GFCI 5-20R Duplex (1) 120/240V 30A L14-30R Twist Lock	214 lbs.	8 gal.
8917	GP18000EFI Electronic Fuel Injection	120/240v	18,000	22,500	Less than 5%	(2) 120V 20A 5-20R Duplex (1) 120V 30A Locking (NEMA L5-30R) (1) 120/240V 30A Locking (NEMA L14-30R) (1) 120/240V AC 50A NEMA 14-50R	439 lbs.	14.2 gal.

Portable Generators in Standby Applications

Looking for a more affordable option? It's right here.



When the Power Goes Out:

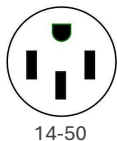
1. Connect your portable generator to the power inlet box with the included power cord.
2. Start the generator and use the transfer switch to deliver power to the electrical panel.
3. Enjoy the convenience of using portable generator power without running extension cords.

Pre-wired Manual Transfer Switches

Pre-wired for easy installation, these updated switch models also feature an electronic rocker button that seamlessly switches between utility and generator power. Indicator lights identify the presence of utility and/or generator power.



Item	Amps @ 240v	Circuits Provided	Req. Main Breaker	Included Breakers	Kit Contents	Dimensions (L" x W" x H")
6853	30	8 (10 max)	50 Amp 2 pole	1- 30A 2- pole 1- 20A 1- pole 5- 15A 1- pole	Transfer Switch. Cord: 10' 10/4 with L14-30 ends. 30 Amp resin power inlet box, wiring harness, conduit and fittings.	15.4 x 15.8 x 4
9855	50	10 (16 Max)	50 Amp 2 pole	(1) 30A 2-pole (1) 20A 2-pole (2) 20A 1-pole (2) 20A 1-pole tandem	Transfer Switch. Cord: 10ft. 6/4 with CS6365 female and 14-50 male ends. 50 Amp aluminum power inlet box, wiring, harness, conduit and fittings	15.4 x 15.8 x 4



Item	Description	Dimensions
6327	30 amp NEMA L14-30 Generator Power Cord	10' Long
6330	50 amp NEMA 14-50 to NEMA CS6365 Power Cord	10' Long
6337	30 amp Raintight Generator Power Inlet Box - NEMA L14-30	5" x 6" x 5"
6338	50 amp Raintight Generator Power Inlet Box - NEMA CS6365	5" x 6" x 5"



DSS-15



DSS-30

Item	Amps / Voltage	Plug Style
DSS-15	15 amp / 120v	115v NEMA 5-15P
DSS-30	30 amp / 240v	120/240v 30a Twist Lock L14-30P

DSS Disconnect Switches - Both a Unit Disconnect, and a Generator Connection

The DSS switch circumvents the main panel for a single circuit appliance, like an AC or Refrigerator, and allows it to run independently on a generator. Perfect for ductless systems where the condenser powers the indoor unit.

The switch replaces the disconnect on the condenser and provides a port to plug in a small generator and be up and running in just a few minutes.

2024 HVAC PRO TIERED BENEFITS PROGRAM

Join trade professionals around North America by working with your distributor and Honeywell Generators to receive our unmatched program benefits.

	ALL PROS	SILVER	GOLD	PLATINUM
REQUIRED ANNUAL ACTIVATIONS ¹	–	12	30	75
PROGRAM BENEFITS				
PER UNIT ADVERTISING ²	–	\$20 PER UNIT	\$50 PER UNIT	\$80 PER UNIT
FREE SERVICE CLASS	–	1	1	2
HOME STANDBY UNIT AT PERSONAL USE PRICE	–	1	1	2
FLEET MONITORING SUBSCRIPTION PER ACTIVATED UNIT ³	–	–	1 YEAR	2 YEARS
EARN ONE 7-YEAR EXTENDED WARRANTY PER 5 GENERATORS ACTIVATED	–	–	✓	✓
PARTICIPATION IN CONSUMER SALES EVENT	–	–	–	✓
STANDARD LISTING ON PRO LOCATOR	✓	✓	✓	✓
TRAINING COURSES	✓	✓	✓	✓
CONSUMER LEADS	✓	✓	✓	✓
SYNCHRONY FINANCING (U.S. ONLY)	✓	✓	✓	✓
MARKETING ON DEMAND	✓	✓	✓	✓
FLEET MONITORING ³	✓	✓	✓	✓
POWERPERKS REWARDS	✓	✓	✓	✓

*All benefits are subject to the discretion of Honeywell Generators. Honeywell Generators reserves the right to stop, start or adjust program benefits at any time.

¹ Product must be registered through Genservice, D360 or Fleet. | ² Funds are loaded into Pro's Marketing on Demand account and are to be used in accordance with Honeywell Generators Co-Op guidelines. | ³ Service providers only or qualified service training required.

GET STARTED TODAY!

Visit bit.ly/HVAC_Pro, scan the QR code, email sales@honeywellgenerators.com or call **855-436-4636 Ext. 5721** to get signed up and start receiving these exclusive Honeywell Generators benefits today!

